

Dare to be

bright er

THE FUTURE BELONGS TO
THOSE WHO ILLUMINATE IT

NORTH AMERICAN SELECTION 24/25

esse-ci
LIVING LIGHT





**LIVING LIGHT,
DARING DESIGN**

*For 40 years Esse-Ci
has been evolving
of the lighting design*

*Dare to be
Together*

1984 | 2024



LIGHT AS A VOCATION, LIGHT AS AN
EXPRESSION, LIGHT AS AN ENGINE
OF THE CHANGE AND VALUE TO MAKE A
DIFFERENCE FOR OUR CUSTOMERS.

We are a constantly evolving company, and our products
also evolve with us.

We have developed solutions capable of illuminating
and enhancing any type of environment, of igniting
people's emotions, of giving impetus to the growth

of an activity, to offer maximum performance while
consuming less energy. But with light we can do even
more: to achieve the next evolution, after all, **we just
have to have the courage to dare, we just have
to imagine it.**

esse-ci
LIVING LIGHT

esse-ci.com

Dare to be



— We design and implement lighting design solutions for indoor and outdoor spaces that combine **superior technical performance** with a modern, elegant style.

Our range of products meets the needs of lighting in the most diverse contexts of **social and working life: offices, commercial buildings, schools and universities, museums, theatres, conference rooms, retail and large distribution, specialised clinics, and hospitals.** We also intervene in the field of public infrastructure, such as **railway and metro stations**, and we contribute to the development of large architectural projects, even externally.



*Dare to go
further*

Dare to be *expert*

— We have been in the world of lighting since 1984. In these **40 years of journey, discovery, and growth**, we have gained the experience and know-how necessary to face each new project starting from a consolidated background of technical skills.

Dare to be *innovative*

— Innovation is at the centre of our design philosophy, and it is precisely thanks to our daily commitment to **technological and stylistic research** that we are able to create solutions that are constantly evolving, increasingly high performing from a technical point of view and aesthetically refined.

Dare to be *inspired*

— We shape our design ideas by drawing inspiration from the **inputs we gather daily** from the lighting and architecture sector as well as from **collaborating with the best international design studios**.

Dare to be *specialized*

— We provide our customers with **specific expertise in architectural lighting**, which has allowed us over time to contribute to the realization of prestigious architectural projects, both indoors and outdoors.

Dare to be *custom*

— The **customisation** of a product is always a major challenge: helping the customer to realise their architectural project with a **tailor-made solution** enhances our ability to evolve in tune with the market and pushes us to constantly enrich our proposal of lighting solutions.

Dare to be *excellent*

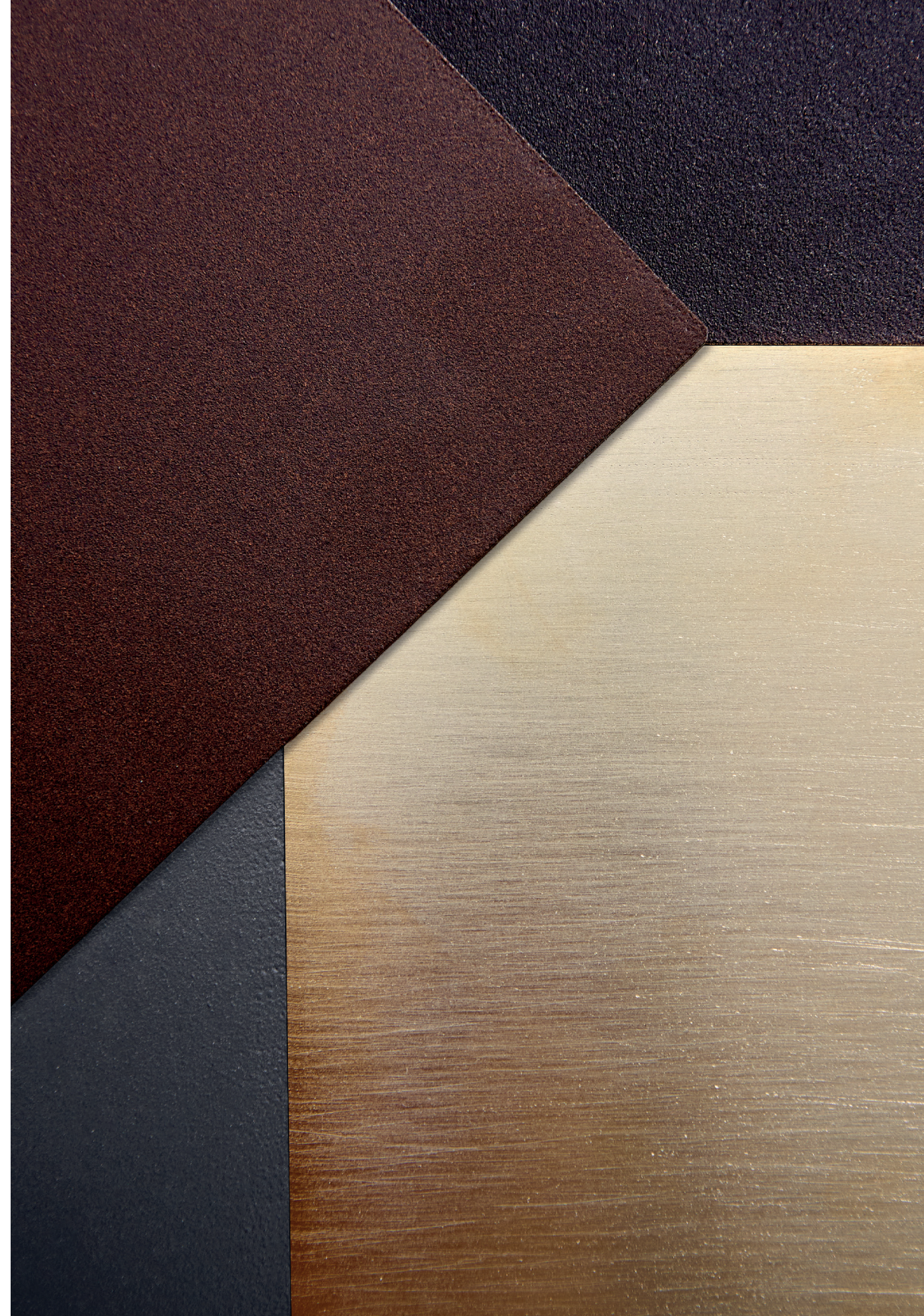
— Behind each Esse-Ci product there is the **attention to detail** and the experience of an artisan laboratory, the millimetric **precision** of the most **advanced technologies**, the **know-how** that comes from collaboration with research laboratories and universities, the guarantee of **scrupulous controls** at every step of the supply chain.

Dare to be *global*

— Our light now travels **all over the world**, making Esse-Ci a globally recognized and appreciated brand. We export our proudly Made in Italy products to **Europe, Africa, the Middle East, and East Asia, all the way to North America**.

Dare to be *safe*

— We are sensitive and attentive to **people's well-being**, which is why we design our solutions by choosing **the most innovative and safe technologies available**, privileging high-quality LEDs that emit light free of IR or UV radiation.



Dare to be
coloured

Esse-Ci solutions allow you **to dare even with colours** and finishes to obtain a customized design to the maximum and capable of enhancing the environment in which the lighting will be installed.

**YOUR LIGHT HAS INFINITE
CREATIVE POSSIBILITIES**

Choose how to customize your design with many combinations of colours and finishes.



SATIN GOLD
Finish: SMOOTH
Code: SO



SATIN CHROME
Finish: SMOOTH
Code: SA



TITANIUM
Finish: SMOOTH
Code: ST



LIGHT GOLD
Finish: SMOOTH
Code: CO



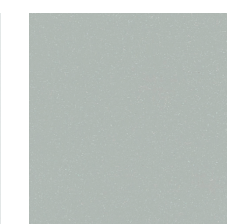
POLISHED SILVER
Finish: SMOOTH
Code: CA



BLACK NICKEL
Finish: SMOOTH
Code: CNN



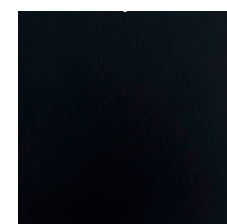
RAL 9003
Finish: SMOOTH
Code: B



RAL 9006 GLOSSY
Finish: SMOOTH
Code: C2



RAL 7016 MATT
Finish: SMOOTH
Code: C32



RAL 9005 MATT
Finish: SMOOTH
Code: C8



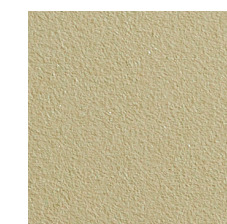
RAL 1036 MATT
Finish: SMOOTH
Code: C63



RAL 6005
Finish: WRINKLED
Code: VR



SAGE GREEN
Finish: WRINKLED
Code: SL



YUMA GOLD
Finish: WRINKLED
Code: SB



RAL 9003
Finish: WRINKLED
Code: W



MARS 2525 SABLÉ
Finish: WRINKLED
Code: BC



OXIDIZED COPPER
Finish: WRINKLED
Code: RA



GRIS SABLÉ
Finish: WRINKLED
Code: GA



BLACK
Finish: WRINKLED
Code: BK



Dare to be sustainable

— Looking courageously into the future for us also means recognising that the future depends on the responsible actions we, as a company, will be able to take in the coming years.

Our commitment in this area has been measured and certified in recent months by Warrant Hub through an innovative ESG - GRI referenced scoring model that has photographed our corporate sustainability performance with the aim of highlighting the strengths, weaknesses and possible areas for improvement. Not a simple evaluation, therefore, but a strategic planning tool thanks to which we can take increasingly decisive steps in the direction of change.



ENVIRONMENT

— Protecting the environment and the resources that the Planet offers us is at the heart of our action plan. The first goal we set ourselves is to reduce the use of virgin raw material as much as possible to contribute to a more sustainable production.

We have long since started a virtuous path that, over the years, will lead us to progressively **increase the percentage of renewable or recycled** raw materials in our products and packaging. Already today, moreover, our articles and the **packaging** in which they are contained are almost entirely **recyclable**.

Energy management is another area where we can and want to do a lot for the environment. We have implemented a monitoring system through which we can measure the energy consumption of all our machinery and processes in order to identify any areas of waste and inefficiencies: the collection of these data allows us to plan targeted energy efficiency strategies and adopt corrective measures in order **to optimize the energy management of all our activities, thus reducing their environmental impact, as well as costs**. In the near future, we will also install a photovoltaic system thanks to which we will be able to fully cover our energy needs, without having to resort to fossil sources.

The third area of intervention concerns the optimisation of **waste management**. We have set clear targets to continue to reduce their quantity during production and at the same time increase the part of them that is destined for recycling. In this regard, we already manage to allocate a high percentage of the waste we generate to recycling, thus helping to promote the circular economy model.



SOCIAL

— We have a responsibility not only towards the environment, but also towards all the people who are linked to the Esse-Ci world: our collaborators, our customers, the community of which we are a part.

We have always paid the utmost attention to the **well-being of our employees**, with whom we try to build solid and lasting relationships over time, thanks to which we can become an increasingly united and strong team. We adopt the highest standards in occupational safety, taking care **to provide adequate training to personnel** and to implement all those preventive procedures that allow us to create a safe and secure working environment. In addition to security, we want to offer those who work with us real **opportunities for professional growth**, which translate into stable employment contracts for all employees, benefits and rewards based on performance, and continuous training to improve skills, with update courses for each staff member, some of which are carried out abroad.

The satisfaction of our customers is also fundamental, which is why we build a relationship based on listening and collaboration with them. We have created a dedicated communication channel through which our customers can send us reports, feedback and suggestions with the aim of helping us to continuously improve our products and services. Precisely in this regard, in 2021 we created "**Voice of the consumer**", an analysis relating to customer satisfaction: on the basis of the feedback received, we created an improvement program aimed at solving the critical issues that emerged.

As mentioned, social sustainability for us is also attention to the territory. We are committed to involving as many local suppliers as possible, thus contributing to the **economic development of our community in the name of sustainable growth**. In addition, we are involved in many other social initiatives such as sponsorships of events and sports clubs, economic support to local authorities, donations and free supplies of products and maintenance activities, collaborations and internship activities with the University of Venice.



Dare to be
certified

As a company operating on a global scale, we are called to guarantee the highest levels of quality and safety, in full compliance with the regulations of the countries to which we export.

Esse-Ci products are certified according to the most important and stringent international standards, allowing us to be present, today, in the main markets of Europe, North and South America and Asia.



CONTINUOUS ROWS

- ALPHA ID 87
- TWOS ID 54
- ETER ID 62
- ARKEON ID 46
- BRIGHT ID 80
- GROOVE ID 43
- PHORMA ID 89
- SEMPLICE LED ID 67
- DIAMANTE ID 82
- ENDO ID 56
- ENDO DISPLAY ID 55
- PROFREEL ID 83
- FLEX STRIP LED ID 83
- WAVE DISPLAY ID 85
- OVVIO DISPLAY LED ID 40
- GROOVE DISPLAY ID 43

SUSPENDED CEILING

- ONE RING ID 17
- BEN ID 10
- PIPE LINE ID 86
- STICK 2.0 ID 08
- WAVE ID 85
- DIMPLES ID 48
- LITE ID 47

RECESSED

- ABSENT ESSENTIAL ID 41
- LITE ID 47
- DIMPLES ID 48
- FLIP ID 42
- BEN ID 10

DOWNLIGHT

- MAKE ID 39
- MAKE Q ID 39
- MAKE R ID 39
- TERES MICRO ZOOM RECESSED ID 14
- HALL LED DEEP ID 38
- CUBE MINI ID 49
- BOX LED ID 44
- HALL LED PRO ID 38
- HALL LED ESSENTIAL ID 38
- OTELLO LED ID 45
- NEXT ID 50
- HALL LED CEILING EVO ID 28
- HALL LED CEILING PRO ID 28
- HALL LED ESSENTIAL CEILING ID 28

TRACK SYSTEMS

- EUROSTANDARD TRACK ID 15
- LV TRACK ID 15

SPOTLIGHT

- TERES PRO ID 14
- TERES ID 14
- TERES EXTE ID 14
- QI ID 19

LOW VOLTAGE

- GHOSTFEED 2.0 ID 15
- NEXT DK LV ID 50
- BEN LV ID 10
- TERES LV ID 14
- LUJO SPOT ID 20
- LUJO LINEAR 2.0 ID 20
- LUJO LINEAR DK ID 20
- JOOLS LV ID 11
- STYLO LV ID 88

WALL FLOOR

- TOIK ID 56
- MONOD ID 53
- UPLIK ID 76
- ARKEON WALL ID 46

INDUSTRIAL IP

- ERGO ID 02
- ERGO ESSENTIAL ID 02
- LINEA IP54 ID 12
- PCM EVO ID 03
- STILLA ID 05
- GROOVE IP54 ID 43
- GROOVE DISPLAY IP54 ID 43

MEDICAL

- ISIB LED IP54 ID 34
- ISI LED IP55 ID 31
- ISI LED IP65 ID 31
- ARKEON MED ID 46

EMERGENCY

- REM TRACK ID 13
- REM CEILING EVO ID 13
- REM RECESSED ID 13

OUTDOOR IP

- MOON ID 51
- BEN IP54 ID 10
- HALL LED IP67 ID 38
- HALL LED IP66 ID 38
- HALL LED GROUND ID 38
- WALKABOUT ID 93
- KERI ID 60
- HALL LED CEILING IP65 ID 28
- TERES IP66 ID 14
- CLOU ID 59
- GLEIS ID 61
- NOBIS ID 90
- SCOUT ID 91
- MAGIS FLOOD ID 92

Our complete range

The Esse-Ci catalogue includes many other products besides those we offer to the American market: here is the complete range of our indoor and outdoor lighting solutions, capable of meeting the most diverse technical and design requirements.



TWOS

ID ECTWS

- CONTINUOUS ROWS
- PAGE 16



BRIGHT

ID ECBRL

- CONTINUOUS ROWS
- PAGE 20



SEMPLICE

ID ECSMP

- CONTINUOUS ROWS
- PAGE 24



BEN

ID ECBEN

- SUSPENDED/CEILING
- PAGE 28



ONE RING

ID ECONR

- SUSPENDED/CEILING
- PAGE 32



PIPELINE

ID ECPIM / ECPIL

- SUSPENDED/CEILING
- PAGE 36



GHOSTFEED 2.0

ECGF2

- LOW VOLTAGE
- PAGE 42



HALL LED_{CEILING EVO}

ID ECHLC

- DOWNLIGHT
- PAGE 46



NEXT

ID ECNXT

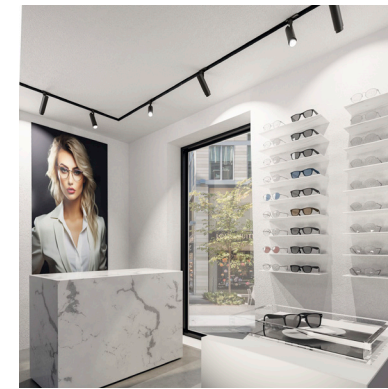
- DOWNLIGHT
- PAGE 50



TERES

ID 14VT

- SPOTLIGHT
- PAGE 52



TERES PRO

ID ECTRP

- SPOTLIGHT
- PAGE 56



CLOU

ECCL

- OUTDOOR IP
- PAGE 60

TWOS

ID ECTWS IP 40



5 YEARS WARRANTY

Minimalism, efficiency, clean lines melt in a complete range of solutions. These are the characteristics of **TWOS**, the new Esse-Ci profile that **reconsiders the classic and timeless lighting profile** multiplying the creative possibilities. TWOS is available in four different versions – with **microcells, diffusers, downlight or 48V integrated track** – to meet any project needs, thanks to the creative junction, the accessory that allows the connection of 2 or more bodies at different angles. Moreover, selecting **TWOS COMBO** it's **possible to integrate the different lighting supports into a single body** to create even more original, particular and refined visible effects.

Features

- Direct emission
- Direct/indirect emission
- UGR<16; <19; <22

Led

- 3000K/4000K
- >125 lm/W
- CRI>90
- Eye safety: RGO/RG1
- Mac Adams 3
- L90/B50 >50.000h

Specifications

- Built-in driver
- CLD technology (UGR<16) for environments with display screen equipment
- Satin diffuser UGR<22
- Polycarbonate lenses
- High Contrast optic
- Continuous indirect emission
- Downlight module

Body

- Aluminum with epoxy powder coating

Colors

- White RAL 9003
- Black RAL 9005

Certifications

- CE Conformity
- ETL Conformity
- Energy efficiency C

On request

- 0-10V
- 3500K

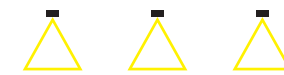
TWOS

Direct emission.

DK - Micro cell optic for UGR<16.

CL - PMMA transparent diffuser with CLD film for UGR<19.

PG - PMMA frosted diffuser UGR<22.



UGR<16 UGR<19 UGR<22 IP 40



TWOS DOUBLE EMISSION

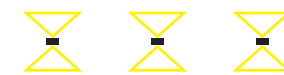
Direct emission.

DK - Micro cell optic for UGR<16.

CL - PMMA transparent diffuser with CLD film for UGR<19.

PG - PMMA frosted diffuser UGR<22.

Indirect emission with PMMA frosted diffuser.



UGR<16 UGR<19 UGR<22 IP 40



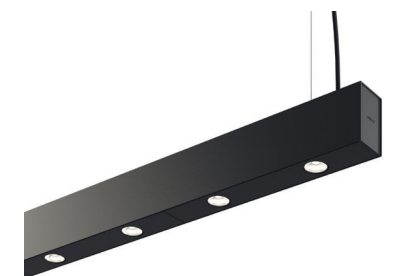
TWOS DOWNLIGHT DOUBLE EMISSION

Downlight modules with PC lens 50°.

Indirect emission with PMMA frosted diffuser.

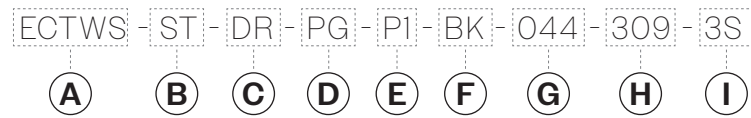


UGR<22 IP 40

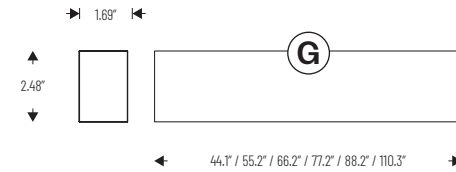


TWOS

PRODUCT CODE EXAMPLE



SIZE



A FAMILY
ECTWS TWOS

B POWER
ST - Standard power (DK and DL versions)
LP - Low power (PG and CL versions)
HP - High power (PG and CL versions)
DP - Decrease power (only for DP, DP followed by up two numbers for indicate the power)

C LIGHT DISTRIBUTION
DR - Direct only
DE - Double emission

D OPTICS
PG - Methacrylate satin diffuser
DK - Microcells high contrast diffuser
CL - CLD
DL - Downlight double emission

E MOUNTING
P1 - Pendant 59.05" (with flexible cord and power box)
P2 - Pendant 59.05" (with flexible cord and power box, for continuous row)
P3 - Pendant 118.11" (with flexible cord and power box)
P4 - Pendant 118.11" (with flexible cord and power box, for continuous row)
SM - Surface mount (ceiling)

F FINISH COLOR
WH - White
BK - Black

G LENGHTS
044 - 44.1" (DK-LP-HP-DL double emission)
055 - 55.2" (LP-HP-DL double emission)
066 - 66.2" (DK-LP-HP)
077 - 77.2" (LP-HP)
088 - 88.2" (DK-LP)
110 - 110.3" (LP)

H LED CCT
309 - 3000K CRI90
359 - 3500K CRI90 (on request)
409 - 4000K CRI90

I WIRING
2S - 0-10V
3S - ON/OFF

LUMEN PACKAGE

	TWOS	DK		PG		CLD	
		4000K	D	DI	D	DI	D
44"	LP	24W 2790lm	36W 4460lm	24W 2912lm	36W 4398lm	24W 2966lm	36W 4451lm
	HP			48W 5379lm	60W 6786lm	48W 5418lm	60W 6897lm
55"	LP			30W 3640lm	46W 5619lm	30W 3707lm	46W 5687lm
	HP			60W 6723lm	76W 8595lm	60W 6722lm	76W 8736lm
66"	LP	36W 4182lm		36W 4367lm		36W 4448lm	
	HP			72W 8068lm		72W 8127lm	
77"	LP			42W 5095lm		42W 5188lm	
	HP			84W 9413lm		84W 9480lm	
88"	LP	48W 5573lm		48W 5819lm		48W 5928lm	
110"	LP			60W 7273lm		60W 7405lm	

ACCESSORIES

ECTWS-09-xx - End caps kit
ECTWS-11 - Linear joint
ECTWS-05-xx - Two ways adjustable joints
ECTWS-06-xx - Three ways adjustable joints
ECTWS-07-xx - Four ways adjustable joints
ECTWS-MC-10-xx - Blind module 39.3"
ECTWS-MC-20-xx - Blind module 78.74"

FINISH ACCESSORIES (xx):

WH- White
BK- Black



TECHNICAL NOTES

Creative junction is an accessory studied and designed to make freer and easier continuous line installation of TWOS profiles to create unexpected geometric light solutions. The two-way version **allows a 180° rotation** both an **electrical and mechanical connection**. The accessory is available in the three-way and four-way version too.



BRIGHT

ID ECBRL IP 40



5 YEARS WARRANTY

BRIGHT's body is made of a **harness holder and a light module that integrates LED and diffuser.**

This allows the accessories to be fixed without any position constraint, while the integration between LED and diffuser guarantees inaccessibility to the optical compartment. The electrical connection between the light module and the battens is guaranteed by quick connectors that prevent polarity inversions and false contacts, thus preserving the LED technology.

BRIGHT DPL

Diffuser with Diamond Prism Technology UGR<19. ILC (Indirect Light Control) technology for partially indirect emission.



UGR<19

IP 40



BRIGHT DPL DOUBLE EMISSION

Lower diffuser with Diamond Prism Technology UGR<19. ILC (Indirect Light Control) technology and upper PG protective diffuser for dual emission: direct/indirect.



UGR<19

IP 40



BRIGHT PG

Antistatic satin methacrylate diffuser screen, UGR<22. Diffuser with ILC (Indirect Light Control) technology for partially indirect emission.



UGR<22

IP 40



BRIGHT DI PG DOUBLE EMISSION

Lower satin methacrylate antistatic diffuser screen, UGR<22. ILC (Indirect Light Control) technology and upper PG protective diffuser for dual emission: direct/indirect.



UGR<22

IP 40



Features

- Direct emission
- Direct/indirect emission
- UGR<19; <22

Led

- 3000K/4000K
- >107 lm/W
- CRI>90
- Eye safety: RGO/RGI
- Mac Adams 3
- L90/B50 >50.000h

Specifications

- Built-in driver
- DPL technology for controlled emission UGR<19
- PG diffuser for homogeneous emission UGR<22
- Diffuser with ILC technology (Indirect Light Control) for partially indirect emission

Body

- Aluminum with epoxy powder coating

Colors

- White RAL 9003
- Black RAL 9005

Certifications

- CE Conformity
- RETILAP Conformity
- ETL Conformity
- Energy efficiency C

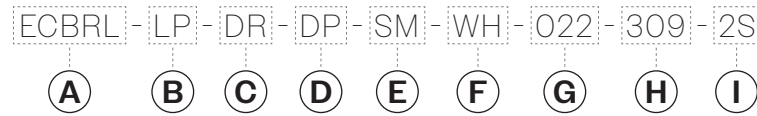
On request

- 0-10V
- 3500K

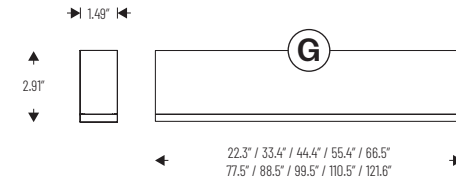


BRIGHT

PRODUCT CODE EXAMPLE



SIZE



(A) FAMILY
ECBRL BRIGHT

(B) POWER
LP - Low power (only for decrease power version indicate the power with max 2 numbers)
HP - High power (only for decrease power version indicate the power with max 2 numbers)

(C) LIGHT DISTRIBUTION
DR - Direct only
DE - Double emission (available only for LP version)

(D) OPTICS
DP - Diamond prism led technology (UGR<19)
PG - Methacrylate satin diffuser (UGR<22)

(E) MOUNTING
P1 - Pendant 59.05" (with flexible cord and power box)
P3 - Pendant 59.05" (with flexible cord and power box, for continuous rows)
PI - Pendant 118.11" (with flexible cmd and power box)
P4 - Pendant 118.11" (with flexible cmd and power box, for continuous row)
SM - Surface mount (ceiling, available only for DR versions)

(F) FINISH COLOR
WH - White
BK - Black

(G) LENGHTS
022 - 22.3"
033 - 33.4"
044 - 44.4" (min length of HP versions)
055 - 55.4"
066 - 66.5" (max length of the HP versions - min length of DE versions)
077 - 77.5"
088 - 88.5"
100 - 99.5"
111 - 110.5"
122 - 121.6"

(H) LED CCT
309 - 3000K CRI90
359 - 3500K CRI90 (on request)
409 - 4000K CRI90

(I) WIRING
2S - 0-10V Dim
3S - ON/OFF

LUMEN PACKAGE

BRIGHT		DP		PG	
4000K		D	DI	D	DI
22.3"	LP	12W 1310lm		12W 1348lm	
33.4"	LP	18W 1966lm		18W 2022lm	
44.4"	LP	24W 2621lm	30W 3221lm	24W 2696lm	30W 3297lm
	HP			48W 5393lm	
55.4"	LP	30W 3276lm	36W 3877lm	30W 4045lm	36W 3971lm
	HP			60W 6741lm	
66.5"	LP	36W 3931lm	48W 5119lm	36W 4045lm	48W 5232lm
	HP			72W 8089lm	
77.5"	LP	42W 4586lm	54W 5774lm	42W 4719lm	54W 5906lm
88.5"	LP	48W 5242lm	72W 7617lm	48W 5393lm	72W 7768lm
99.5"	LP	54W 5897lm	78W 8272lm	54W 6067lm	78W 8442lm
110.5"	LP	60W 6552lm	84W 8927lm	60W 6741lm	84W 9116lm
121.6"	LP	66W 7207lm	90W 9582lm	66W 7415lm	90W 9790lm

ACCESSORIES

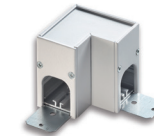
ECBRL 2LINJ-twoways linear joint
ECBRL 2xxxJ-two ways joint - xxx is for indicate the angle
ECBRL 3xxx-xxxJ-three ways joint - xxx is for indicate the angle
ECBRL BMxxxP2-Blind Module - xxx is for indicate the lenght - Pendant 59.05" (with out flexible cord and canopy, for continuous row)
ECBRL BMxxxP4-Blind Module - xxx is for indicate the lenght - Pendant 118.11" (with out flexible cord and canopy, for continuous row)
ECBRL BMxxxSM-Blind Module - xxx is for indicate the lenght - Surface mount (ceiling)

FINISH ACCESSORIES (xx):

WH-White
BK-Black



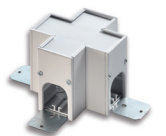
Electrified linear joint.



2 ways electrified joint (dim: 2.36"x2.36").



3 ways electrified joint (dim: 2.36"x32.13").



Blind connection module in aluminium. Linear mechanical joints included. Other lengths on request. Electrified linear joint 4 ways.

SEMPlice LED

ID ECSMP IP 40



5 YEARS WARRANTY

SEMPlice LED is an **innovative lighting solution** suited to a wide range of interior applications including **commercial, leisure and retail environments**. Never before has a product been so versatile, with suspended or directly surface mounted versions available for wall and ceiling mounting. They can be installed individually, continuously mounted or even pattern formed using the tailored range of accessories. Its **uniqueness is a scattered emitted light including the ends**, thanks to the integrated LED technology and translucent end caps. A broad collection of matching products can be implemented for free standing and EU track mounting, giving the user continuity of product and complete design freedom in a project.

Features

- Direct/indirect emission
- UGR<22

Led

- 3000K/4000K
- >125 lm/W
- CRI>80/>90
- Eye safety: RGO/RGI
- Mac Adams 3
- L90/B50 >50.000h

Specifications

- Integrated driver
- PG optics for soft and homogeneous emission with no shadow areas
- EB optics for side emission

Body

- Shockproof, antistatic technopolymer with an exclusive paint treatment that guarantees a homogeneous "soft" emission over the entire surface. The ending and junction accessories are made of the same materials, with an invisible coupling fastening system

Certifications

- CE Conformity
- ETL Conformity
- RETILAP Conformity
- Energy efficiency C

On request

- 0-10V
- 3500K

SEMPlice LED

Ceiling, suspension and wall installation, PMMA technopolymer (UGR<22) with surface treatment for completely uniform light distribution. Integrated LED technology.



UGR<22

IP 40



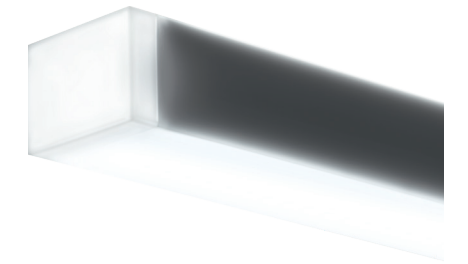
SEMPlice LED EB

Ceiling, suspension and wall installation, PMMA technopolymer (UGR<22) with surface treatment and super-pure aluminum reflector for bi-directional light distribution. Integrated LED technology.



UGR<22

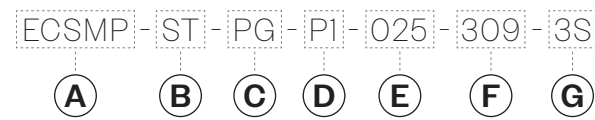
IP 40



Design
Quargnale // Ruatti studio Architetti

SEMPLICE LED

PRODUCT CODE EXAMPLE



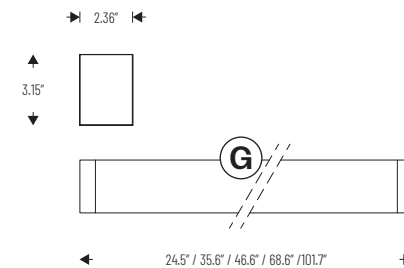
A FAMILY
ECSMP SEMPLICE LED

B POWER
ST - Standard power
DP - Decrease power (only for DP, DP followed by up three numbers for indicated the power)

C OPTICS
PG - Uniform light distribution
EB - Bi-directional light distribution

D MOUNTING
P1 - Pendant 59.05" (with flexible cord and power supply box)
P2 - Pendant 59.05" (with flexible cord and power supply box, for continuous row)
P3 - Pendant 118.11" (with flexible cord and power supply box)
P4 - Pendant 118.11" (with flexible cord and power supply box, for continuous row)
SM - Surface mount (ceiling)
WM - Wall mount

SIZE



E LENGHTS
025 - 24.5"
036 - 35.6"
047 - 46.6"
069 - 68.6"
102 - 101.7"

F LED CCT
309 - 3000K CRI90
359 - 3500K CRI90 (on request)
409 - 4000K CRI90

G WIRING
2S - 0-10V
3S - ON/OFF

LUMEN PACKAGE

SEMPLICE LED		PG	EB
4000K		Direct emission	Double lateral emission
24.5"	LP	24W 2268lm	24W 2167lm
35.6"	LP	36W 3402lm	36W 3251lm
46.6"	LP	48W 4536lm	48W 4334lm
68.6"	LP	72W 6804lm	72W 6502lm
101.7"	LP	108W 10206lm	108W 9752lm

ACCESSORIES

ECSMP-11 - Electrified linear joint
ECSMP-050-WH - Internally electrified creative joint for horizontal change of direction
ECSMP-05V-WH - Internally electrified 90° joint for vertical change of direction



Electrified linear joint with total emission for continuous rows installation.



Internally electrified creative joint for horizontal change of direction.



Internally electrified 90° joint for vertical change of direction.

BEN

ID ECBEN IP 40



5 YEARS WARRANTY

BEN is the **universal luminaire for wall, ceiling, suspension or recessed installation** with bodies made entirely of **aluminum**, without welding. The IP 40 version offers **both satin and microprismatic diffusers** with DPL UGR<19 technology. The mid-power LED on circular boards avoid the creation of shadow areas and are connected to the internal supports via quick connectors, for easy electrification.

Features

- Direct emission
- Direct/indirect emission
- UGR<19; <22

Led

- 3000K/4000K
- >125 lm/W
- CRI >90
- Eye safety: RGO/RGI
- Mac Adams 3
- L90/B50 >50.000h

Specifications

- Built-in driver
- Impact resistant satin acrylic PG diffuser with UGR<22
- Impact resistant DPL diffuser with homogeneous and controlled emission UGR<19

Body

- Aluminum with epoxy powder coating

Colors

- Matte white RAL 9003
- Matte black RAL 9005

Certifications

- CE Conformity
- ETL Conformity
- RETILAP Conformity
- Energy efficiency C

On request

- 0-10V
- 3500K

BEN PG

Ceiling and recessed installation, PG diffuser with frosted Acryl- Satiné and impact resistant diffuser UGR<22.



UGR<22

IP 40



BEN PG DOUBLE EMISSION

Suspension installation, PG diffuser with frosted Acryl-Satiné and impact resistant diffuser UGR<22. Direct/indirect emission.



UGR<22

IP 40



BEN PG

Ceiling and recessed installation, PG diffuser with frosted Acryl- Satiné and impact resistant diffuser UGR<22.



UGR<19

IP 40



BEN PG DOUBLE EMISSION

Suspension installation, PG diffuser with frosted Acryl-Satiné and impact resistant diffuser UGR<22. Direct/indirect emission.

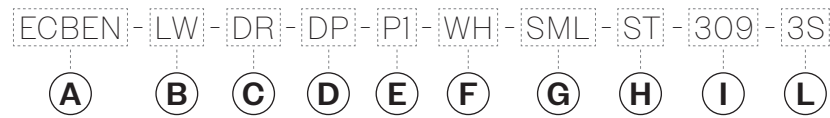


UGR<19

IP 40



PRODUCT CODE EXAMPLE



SIZE



(A) FAMILY
ECBEN BEN

(B) POWER
LW - Low power
MW - Medium power
HP - High power
DP - Decrease power (only for DP, DP followed by up three numbers for indicate the power)

(C) LIGHT DISTRIBUTION
DR - Direct only
DE - Double emission

(D) OPTICS
DP - Diamond prism led technology (UGR<19)
PG - Satin diffuser (UGR<22)

(E) MOUNTING
PI - Pendant 59.05" (with flexible cord and power box)
P3 - Pendant 118.11" (with flexible cord and power box)
SM - Surface mount (ceiling - only DR versions)
WM - Wall monted (only DR versions)
RS - Recessed (trimless)
RF - Recessed, frame (not available for XL and MAXI)

(F) FINISH COLOR
WH - White
BK - Black

(G) SIZE
SML - Small (available LW-MW-HW-DP)
MDM - Medium (available MW-HW-DP)
LRG - Large (available MW-HW-DP)
XLG - Extra large (available MW-HW-DP)
MAX - Maxi (available MW-HW-DP)

(H) PROTECTION
ST - IP40

(I) LED CCT
309 - 3000K CRI90
359 - 3500K CRI90 (on request)
409 - 4000K CRI90

(L) WIRING
2S - 0-10V Dim
3S - ON/OFF

LUMEN PACKAGE

	BEN	PG		DP	
		4000K	D	DI	D
8.5"	LP	6W 798lm	15W 2014lm	6W 702lm	15W 1918lm
	MP	12W 1598lm	21W 2814lm	12W 1406lm	21W 2622lm
	HP	18W 1394lm	27W 3610lm	18W 2106lm	27W 3322lm
15.62"	LP	15W 2111lm	24W 3733lm	15W 1857m	24W 3479lm
	HP	21W 2887lm	30W 4509lm	21W 2540lm	30W 4162lm
24.21"	LP	58W 8072lm	82W 11285lm	58W 7103lm	82W 10316lm
	HP	96W 12710lm	120W 15923lm	96W 11184lm	120W 14397lm
33.46"	LP	70W 9564lm	100W 13580lm	70W 8416lm	100W 12432lm
	HP	150W 20550lm	180W 24566lm	150W 18084lm	180W 22100lm
42.52"	LP	125W 16496lm	161W 21316lm	125W 14516lm	161W 19336lm
	HP	185W 24420lm	221W 29240lm	185W 21489lm	221W 26309lm



ACCESSORIES



Kit for recessed frameless installation on plasterboard.



Kit for recessed installation on plasterboard and concrete.



Kit for suspended installation. Cable length 59.05"/118.11".

ONE RING

ECONR IP 40



5 YEARS WARRANTY

ONE RING is a **decorative yet highly technical fixture with a minimal design** and multiple application possibilities. Available in a range of diameters, for direct ceiling or suspended mounting, with direct or direct/indirect light emission and the possibility of adding adjustable spotlights for accent lighting. With the option of including a central acoustic with sound absorption panels, **ONE RING** is a truly unique lighting solution.

Features

- Direct emission
- Direct/indirect emission
- UGR<22; <19

Led

- 3000K/4000K
- >107 lm/W
- CRI>90
- Eye safety: RGO/RG1
- Mac Adams 3
- L90/B50 >50.000h

Specifications

- Satin methacrylate diffuser for homogeneous emission UGR<22
- Impact resistant DPL diffuser with homogeneous and controlled emission, UGR<19

Body

- Aluminum with epoxy powder coating

Colors

- White RAL 9003
- Black RAL 9005

Certifications

- CE Conformity
- RETILAP Conformity
- ETL Conformity
- Energy efficiency C

On request

- 0-10V
- 3500K

ONE RING PG/DPL

PG - Satin methacrylate diffuser for homogeneous emission UGR<22.

DPL - Diffuser with Diamond Prism LED technology with UGR<19.



UGR<22 UGR<19 IP 40



Power supply box and suspensions included.

ONE RING PG/DPL DOUBLE EMISSION

PG - Satin methacrylate diffuser for homogeneous emission UGR<22.

DPL - Diffuser with Diamond Prism LED technology with UGR<19.

Direct/indirect emission.



UGR<22 UGR<19 IP 40

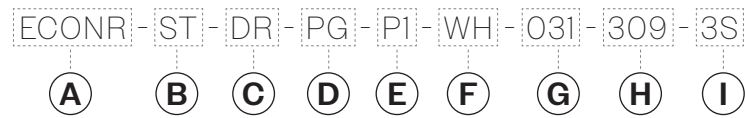


Power supply box and suspensions included.



ONE RING

PRODUCT CODE EXAMPLE



SIZE



(A) FAMILY
ECONR ONE RING

(B) POWER
ST - Standard power
DP - Decrease power (only for DP, DP followed by up two numbers for indicate the power)

(C) LIGHT DISTRIBUTION
DR - Direct emission
DE - Double emission

(D) OPTICS
PG - Methacrylate satin diffuser
DP - Diamond prism technology

(E) MOUNTING
P1 - Pendant 59.05" (with flexible cord and power box)
P3 - Pendant 118.11" (with flexible cord and power box)
SM - Surface mount (ceiling)

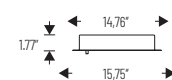
(F) FINISH COLOR
WH - White
BK - Black

(G) DIAMETER
031 - 31.1"
045 - 44.9"
060 - 59.5"

(I) LED CCT
309 - 3000K CRI90
359 - 3500K CRI90 (on request)
409 - 4000K CRI90

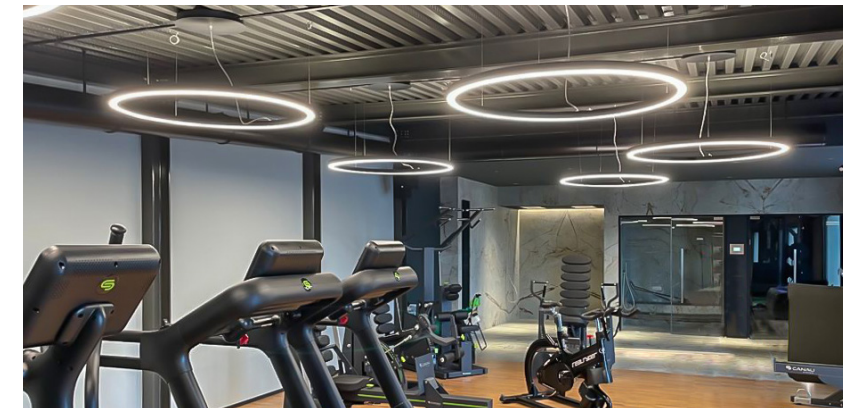
(L) WIRING
2S - 0-10V Dim
3S - ON/OFF

CEILING ROSE TECHNICAL SPECIFICATIONS



LUMEN PACKAGE

ONE RING		PG		DP	
4000K		D	DI	D	DI
31.1"	LP	39W 4173lm	63W 6057lm	39W 3950lm	63W 5834lm
44.9"	LP	58W 6216lm	93W 8966lm	58W 5880lm	93W 8630lm
59.5"	LP	77W 8288lm	123W 11588lm	77W 7840lm	123W 11140lm



PIPE LINE

ID ECPIM/ECPIL IP 40



5 YEARS WARRANTY

Stylish and extremely minimal design combined with high performance make **PIPE LINE** a direct emission suspension suitable for illuminating any setting: office, retail, or residential environments. The remote driver makes installation extremely flexible. The **PG optics**, providing uniform emission, enable the illumination of spaces with diffuse light, while the **High Contrast microcell optics** with superior glare control (**UGR<16**) is the perfect solution for desks and workstations.

PIPE LINE MONO PG

Methacrylate satin diffuser for soft diffusion, UGR<22.



UGR<22

IP 40



PIPE LINE MONO DK

High Contrast diffuser UGR<16.



UGR<16

IP 40



Features

- Direct/indirect emission
- Direct emission
- UGR<16; <22

Led

- 3000K/4000K
- >132 lm/W
- CRI>90
- Eye safety: RG0/RG1
- Mac Adams 3
- L90/B50 >50.000h

Specifications

- PG: satin methacrylate diffuser for homogeneous emission UGR<22
- HC: diffuser with UGR<16 microcells
- PG-HC: a combination of homogeneous emission and High Contrast
- DK: diffuser with UGR<16 microcells

Body

- Aluminum with epoxy powder coating

Colors

- White RAL 9003 wrinkled
- Black RAL 9005 wrinkled

Certifications

- CE Conformity
- RETILAP Conformity
- ETL Conformity
- Energy efficiency D

On request

- 0-10V
- 3500K



PIPE LINE_MONO

PRODUCT CODE EXAMPLE

ECPIM - ST - PG - PI - BK - 057 - 309 - 3S

(A) (B) (C) (D) (E) (F) (G) (H)

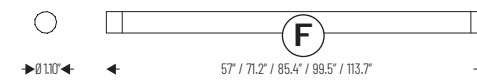
(A) FAMILY
ECPIM PIPE LINE MONO

(B) POWER
ST - Standard power
DP - Decrease power (only for DP, DP followed by up two numbers for indicate the power)

(C) OPTICS
PG - Methacrylatee satin diffuser
DK - Microcells high contrast diffuser

(D) MOUNTING
P1 - Pendant 59.05" (with flexible cord and power box)
P3 - Pendant 118.11" (with flexible cord and power box)
SM - Surface mount (ceiling)

SIZE



(E) FINISH COLOR
WH - White
BK - Black

(F) LENGHTS
057 - 57"
071 - 71.2"
085 - 85.4"
100 - 99.5"
114 - 113.7"

(H) LED CCT
309 - 3000K CRI90
359 - 3500K CRI90 (on request)
409 - 4000K CRI90

(L) WIRING
2S - 0-10V
3S - ON/OFF

LUMEN PACKAGE

PIPE LINE		PG	DK
4000K		D	D
57"	LP	31W 4092lm	31W 3575lm
71"	LP	39W 5148lm	39W 4497lm
85.4"	LP	46W 6072lm	46W 5305lm
99.5"	LP	54W 7128lm	54W 6227lm
113.7"	LP	62W 8184lm	62W 7150lm

PIPE LINE_DUO



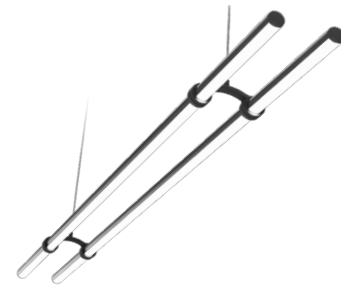
PIPE LINE DUO ___ PG

Methacrylate satin diffuser for soft diffusion, UGR<22.



UGR<22

IP 40



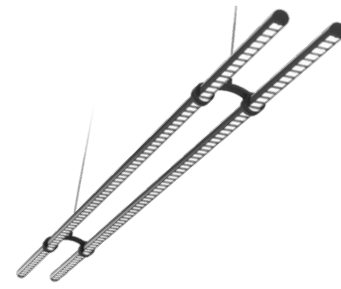
PIPE LINE DUO ___ DK

Microcells High Contrast diffuser, UGR<16.



UGR<22

IP 40



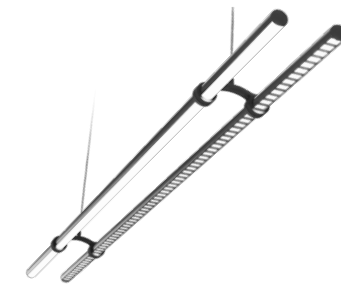
PIPE LINE DUO ___ PG-DK

Combination between soft homogeneous emission and High Contrast microcells accents.



UGR<22

IP 40



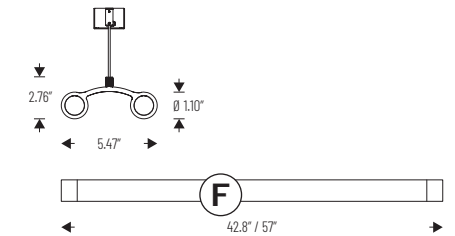
PIPE LINE DUO

PRODUCT CODE EXAMPLE

ECPI - ST - DK - P1 - BK - 043 - 309 - 3S

(A) (B) (C) (D) (E) (F) (G) (H)

SIZE



(A) FAMILY
ECPI PIPE LINE DUO

(B) POWER
ST - Standard power
DP - Decrease power (only for DP, DP followed by up two numbers for indicate the power)

(C) OPTICS
PG - Methacrylate satin diffuser
DK - Microcells high contrast diffuser
PD - Combination between soft homogeneous emission and high contrast microcells accents

(D) MOUNTING
P1 - Pendant 59.05" (with flexible cord and power box)
P3 - Pendant 118.11" (with flexible cord and power box)
SM - Surface mount (ceiling)

(E) FINISH COLOR
WH - White
BK - Black

(F) LENGTHS
043 - 42.8"
057 - 57"

(G) LED CCT
309 - 3000K CRI90
359 - 3500K CRI90 (on request)
409 - 4000K CRI90

(H) WIRING
2S - 0-10V
3S - ON/OFF

LUMEN PACKAGE

PIPE LINE DUO		PG	DK	PD
4000K		Adjustable emission	Adjustable emission	Adjustable emission
42.8"	LP	48W 6254lm	48W 5538lm	48W 5946lm
57"	LP	62W 8184lm	62W 7149lm	62W 7667lm

GHOSTFEED 2.0

ID ECGF2 IP 40



5 YEARS WARRANTY

GHOSTFEED 2.0 is the new **single-cable system** that, with a minimal installation impact, is able to create continuous **lines of light extending up to fifteen meters**. The special tensioners require only two anchoring points, thus finding space even in those architectural solutions where the presence of the light source must be particularly discreet. **The low voltage system of GHOSTFEED 2.0** allows the installation of **LED strips for direct and indirect light**; further versatility is conferred by accessories such as **diffusing optics, blind modules** and adjustable **micro-spots for accent lighting**.

Features

- Direct/indirect emission
- UGR<22
- IP 40

Led

- 2700K/3000K/4000K
- CRI>90
- Eye safety: RGO/RG1
- Mac Adams 3
- L90/B50 >50.000h

Specifications

- Remote driver
- Diffuser in satin methacrylate for direct/indirect emission

Body

- Steel sheet with epoxy powders coating

Colors

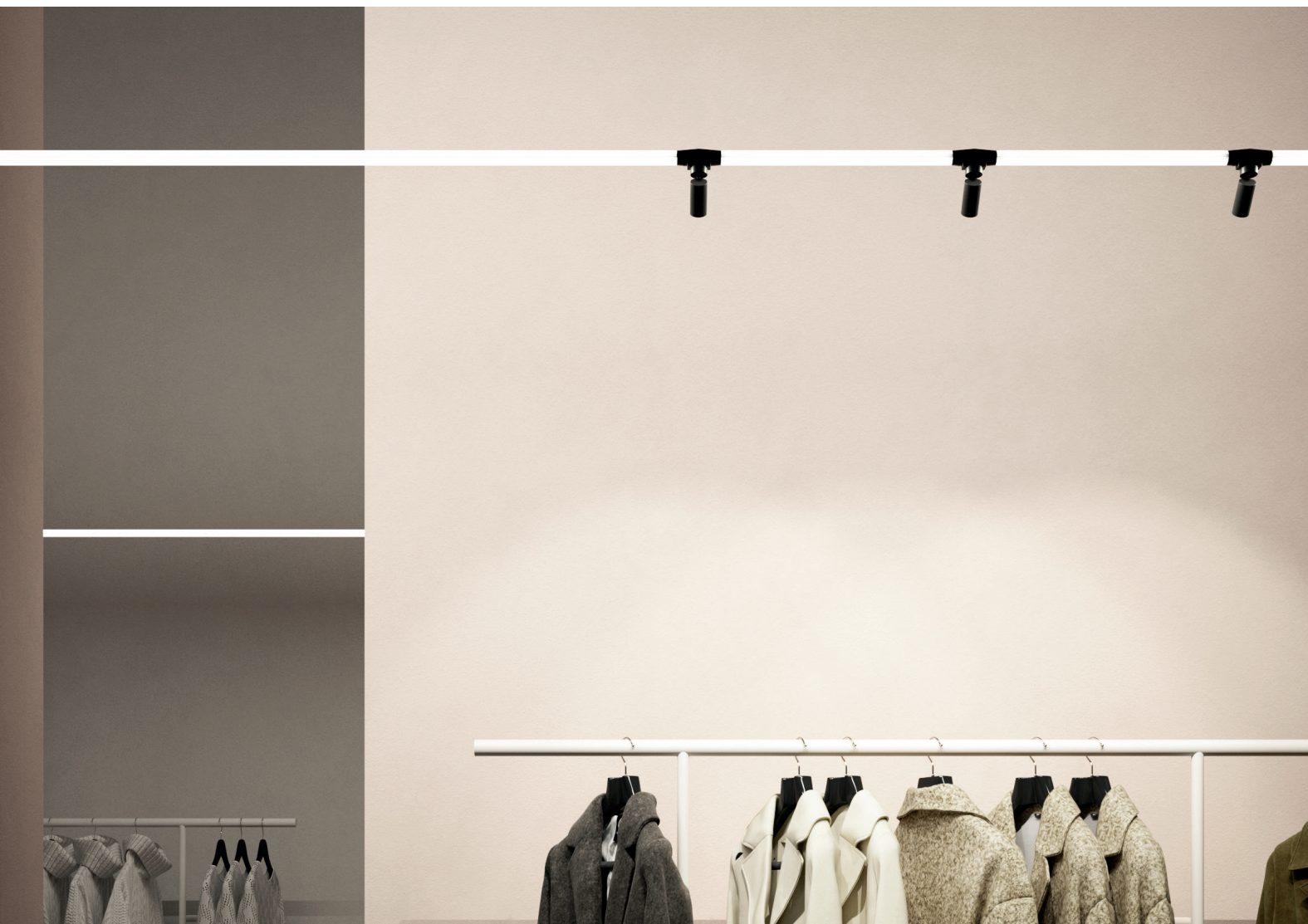
- White wrinkled matte RAL 9003 - code W
- Black RAL 9005 matte - code BK

Certifications

- CE Conformity
- BIS Conformity
- RETILAP Conformity
- Energy efficiency E

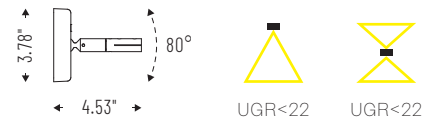
On request

- 0-10V
- 3500K



GHOSTFEED 2.0

Kit of two die-cast aluminum wall tensioners and metal support strip.



Cod.	in
ECGF2KT5M	196.85"
ECGF2KT10M	393.70"



GHOSTFEED STRIP

Adhesive LED strip 24V CRI>90, 10W/ In. Length 196.85", sectionable every 0.98".

Cod. 4000K	Led	lm/in	in
ECGF2ST40924V10	10W	940	196.85"

Cod. 3000K	Led	lm/in	in
ECGF2ST30924V10	10W	813	196.85"

IP 20

Cod. 2700K	Led	lm/in	in
ECGF2ST27924V10	10W	760	196.85"



GHOSTFEED SPOT ZOOM

Micro spot with adjustable beam from 10° to 40° including attack for Ghostfeed 2.0.



Cod. 4000K	Led	lm
ECGF2SZ40924V3	3W	262

Cod. 3000K	Led	lm
ECGF2SZ30924V3	3W	238

Cod. 2700K	Led	lm
ECGF2SZ27948V3	3W	221



ACCESSORIES



PG satin diffuser, for direct/indirect light.

ECGF2SCPG1000 - L 39.37"
ECGF2SCPG2000 - L 78.74"
ECGF2SCPG3000 - L 118.11"



Blind module.

ECGF2SCMC1000 - L 39.37"
ECGF2SCMC2000 - L 78.74"
ECGF2SCMC3000 - L 118.11"



Quick connector for strip-cable connection.

ECGF2CRSC



Quick connector for strip-strip connection.

ECGF2CRSS



Slim driver 24V - for remote installation.

ECGF2DC24V60WIS
ECGF2DC24V100WIS



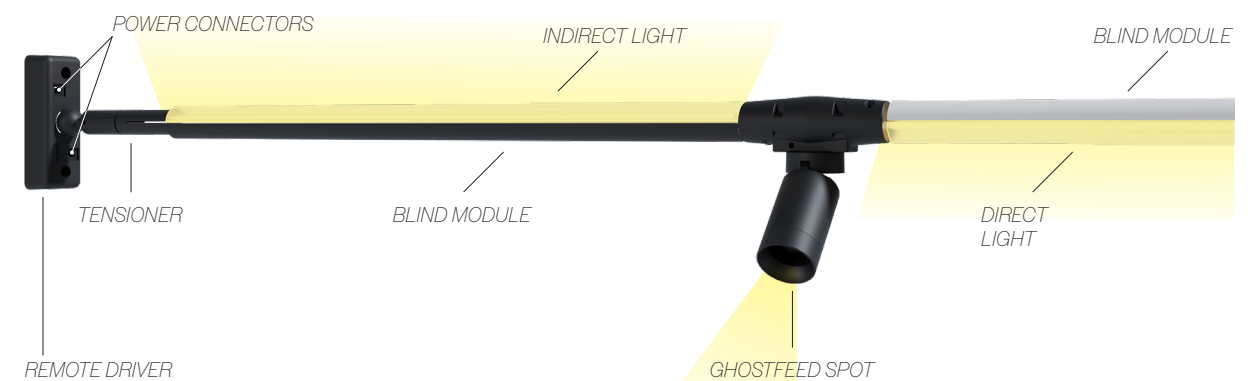
Driver cover.

ECGF2DC24V60W
ECGF2DC24V100W

TECHNICAL NOTES

CONFIGURATION EXAMPLE

Maximum length of the metal band: 590.55". Two-point wall anchoring. 40° of maximum inclination towards the wall mount.



HALL LED CEILING EVO

ID ECHLC IP 44



5 YEARS WARRANTY

HALL LED CEILING EVO is the downlight solution for ceiling application, available in four sizes: **mini, small, medium, large** and different outputs, in order to satisfy all lighting requirements. A further advantage is given by the degree of protection **IP 44** and **the available range of optics**. Chip on board technology and integrated driver offer high efficiency and simple installation.

Features

- Direct emission
- UGR<19

Led

- 3000K/4000K
- >135 lm/W
- CRI>90
- Eye safety: RGO/RGI
- Mac Adams 3
- L90/B50 >50.000h

Specifications

- Built-in driver
- CoB LED technology
- MINI: aluminum internal reflectors - beam angles: 15°-20°-36°-50°
- SMALL: aluminum internal reflectors - beam angles: 10°-20°-40°-50°
- MEDIUM/LARGE: aluminum internal reflectors - beam angles: 10°-12°-20°-40°-70°

Body

- Die-cast aluminum with epoxy powder coating

Colors

- White RAL 9003 wrinkled
- Black RAL 9005 wrinkled

Certifications

- CE Conformity
- RETILAP Conformity
- ETL Conformity
- Energy efficiency F

On request

- 0-10V
- 3500K

HALL LED CEILING EVO VT

Ceiling installation.

Internal aluminum reflectors with transparent protective glass. Cut-off>30°.



UGR<19

IP 44



HALL LED CEILING EVO VT

Pendant installation.

Internal aluminum reflectors with transparent protective glass. Cut-off>30°.



UGR<19

IP 44



HALL LED CEILING EVO

PRODUCT CODE EXAMPLE

ECHLC - LP - CG - 10 - P1 - WH - MN - 309 - 3S

A **B** **C** **D** **E** **F** **G** **H** **I**

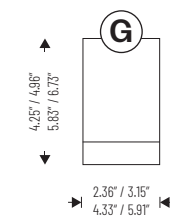
A FAMILY
ECHLC HALL LED CEILING EVO

B POWER
LP - Low power
MP - Medium power
HP - High power
DP - Decrease power (only for DP, DP followed by up two numbers for indicate the power)

C OPTICS
CG - Clear glass
GC - Diffused glass

D BEAM ANGLE
10 - 10° beam angle (SM-MD)
12 - 12° beam angle (LG)
15 - 15° beam angle (MN)
20 - 20° beam angle (MN-SM-MD-LG)
36 - 36° beam angle (MN)
40 - 40° beam angle (SM-MD-LG)
50 - 50° beam angle (MN-SM)
70 - 70° beam angle (MD-LG)

SIZE



E MOUNTING
P1 - Pendant 59.05" (with flexible cord and power box)
P3 - Pendant 118.11" (with flexible cord and power box)
SM - Surface mount (ceiling)

F FINISH COLOR
WH - White
BK - Black

G DIAMETER
MN - Mini 2.36" (HP only ON/OFF 7W - HP only 0-1.0V 7W - only SM surface mount)
SM - Small 3.15" (HP 20 - MP 14W)
MD - Medium 4.33" (HP 29W - MP 20W)
LG - Large 5.91" (HP 60W - MP 44W - LP 41W)

H LED CCT
309 - 3000K CRI90
359 - 3500K CRI90 (on request)
409 - 4000K CRI90

I WIRING
2S - 0-10V Dim
3S - ON/OFF



LUMEN PACKAGE

HALL LED CEILING EVO		VT
4000K		D
2.36"	LP	7W 107lm
3.15"	LP	14W 1152lm
	HP	20W 1595lm
4.33"	LP	20W 2316lm
	HP	29W 3151lm
5.91"	LP	41W 4029lm
	MP	44W 4214lm
	HP	60W 5647lm

ACCESSORIES

ANTI GLEAR RINGS:
ECHLC-80AG - Anti glare ring for small version
ECHLC-110AG - Anti glare ring for medium version



Anti glare rings.

NEXT

ID ECNXT IP 40



5 YEARS WARRANTY

NEXT is the **contemporary design fixture** that perfectly fits in those architectural contexts where sober and minimal shapes are required. It is available as indoor versions for ceiling, recessed or recessed frameless installation, **with controlled UGR optics (<16)**.

NEXT DK CEILING

Ceiling installation. High Contrast diffuser UGR<16.



UGR<16 IP 40



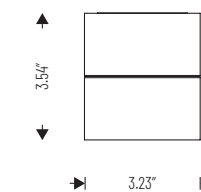
NEXT DK SUSPENSION

Suspension installation. High Contrast diffuser UGR<16.



UGR<16 IP 40

SIZE



Features

- Direct emission
- Direct/indirect emission
- UGR<16

Led

- 3000K/4000K
- >80 lm/W
- CRI>90
- Eye safety: RG0/RG1
- Mac Adams 3
- L90/B50 >50.000h

Specifications

- Built-in driver
- SMD LED technology
- High Contrast UGR<16 diffuser

Body

- Die-cast aluminum with epoxy powder coating

Colors

- White RAL 9003 wrinkled
- Black RAL 9005 wrinkled

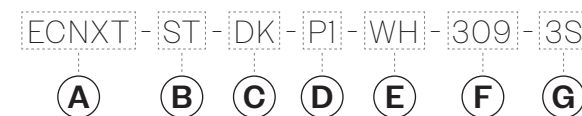
Certifications

- CE Conformity
- RETILAP Conformity
- ETL Conformity
- Energy efficiency E

On request

- 0-10V
- 3500K

PRODUCT CODE EXAMPLE



A FAMILY
ECNXT NEXT

B POWER
ST - Standard power
DP - Decrease power (only for DP, DP followed by up two numbers for indicate the power)

C OPTIC
DK- Microcells high, contrast diffuser

D MOUNTING
P1 - Pendant 59.05" (with flexible cord and power box)
P3 - Pendant 118.11" (with flexible cord and power box)
SM - Surface mount (ceiling)

ACCESSORIES



Kit for suspension version with flexible cord 59.05"/118.01" and power box.

E FINISH COLOR
WH - White
BK - Black

F LED CCT
309 - 3000K CRI90
359 - 3500K CRI90 (on request)
409 - 4000K CRI90

G WIRING
2S - 0-10V Dim
3S - ON/OFF

LUMEN PACKAGE

NEXT		DK	
4000K		D	
3.25x3.54"	LP		16W 1262lm



TERES

ID ECTRS IP 40



5 YEARS WARRANTY

TERES is the **sophisticated and professional track spot** that, thanks to the **built-in driver**, compact design and advanced technology, has managed to hit the spot in the retail world, adapting completely to any environment without being invasive. Its **technical vocation** is also suitable for areas that need more decisive lighting thanks to the **High Flux version, with efficiencies up to 110lm/W**. The **Wall Washer** version with asymmetrical beam and the new **HF FOOD version**, dedicated to the best color rendering of food, complete a range that has now become the **reference point in the world of spotlights**.

TERES SMALL VT

Track spot with compact dimensions and High Efficiency, ideal for accent lighting for shops and exhibition areas.

The minimal body makes it a furnishing complement and not just a spot to illuminate commercial environments.

Internal aluminum reflectors.

Beam angles: 10°-20°-40°-50°.



UGR<19

IP 40



TERES MEDIUM VT

Track spot with High Flux for excellent lighting inside rooms, ideal for large areas and shops.

The driver integrated into the lamp body makes it a minimal spot even if with High Efficiencies.

Internal aluminum reflectors.

Beam angles: 10°-20°-40°-70°.



UGR<19

IP 40



Features

- Direct emission
- UGR<19

Led

- 3000K/4000K
- >110 lm/W
- CRI>90
- Eye safety: RGO/RGI
- Mac Adams 3
- L90/B50 >50.000h

Specifications

- Built-in driver
- CoB LED technology
- Internal aluminum reflectors, beam angles: 10°-15°-20°-36°-40°-50°-70°

Body

- Die-cast aluminum with epoxy powder coating

Colors

- White RAL 9003 wrinkled
- Black RAL 9005 wrinkled

Certifications

- CE Conformity
- BIS Conformity
- RETILAP Conformity
- ETL Conformity
- Energy efficiency C

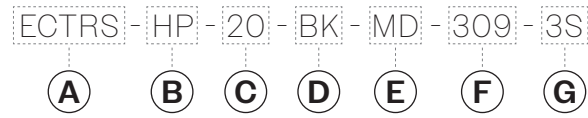
On request

- 0-10V
- 3500K

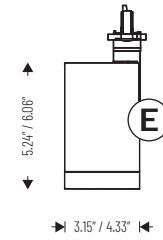


TERES

PRODUCT CODE EXAMPLE



SIZE



(A) FAMILY
ECTRS TERES

(B) POWER
MP - Medium power (13W SMALL version/
25W MEDIUM version)
HP - High power (18W SMALL version/
33W MEDIUM version)
DP - Decrease power (only for DP, DP followed
by up two numbers for indicate the power)

(C) BEAM ANGLE
10 - 10° beam angle
20 - 20° beam angle
40 - 40° beam angle
50 - 50° beam angle (only for small version)
70 - 70° beam angle (only for medium version)

(D) FINISH COLOR
BK - Black
WH - White

(E) SIZE
MD - Medium
SM - Small

(F) LED CCT
309 - 3000K CRI90
359 - 3500K CRI90 (on request)
409 - 4000K CRI90

(G) WIRING
2S - 0-10V Dim
3S - ON/OFF

ACCESSORIES

TERES OPTICS:

ECTRS-VT-x - Transparent glass
S - Transparent glass for small version
M - Transparent glass for medium version

ECTRS-MG-x - Matt glass
S - Matt glass for small version
M - Matt glass for medium version

ECTRS-SL-x - Micro engraved glass
S - Micro engraved glass for small version
M - Micro engraved glass for medium version

ECTRS-ND-x - Honeycomb
S - Honeycomb for small version
M - Honeycomb for medium version

ANTI GLEAR RINGS:

ECTRS-80AG - Anti glare ring for small version
ECTRS-110AG - Anti glare ring for medium version

FINISHING COLOR:

BK- Black
W-White
WBK - White external Color / Black internal color
(only for anti glare rings)

LUMEN PACKAGE

TERES		
	4000K	VT
3.15"	LP	9W 1467lm
	HP	12W 1991lm
4.33"	LP	19W 2874lm
	HP	26W 3683lm



Anti glare rings.

TERES PRO

ID ECTRP IP 40



5 YEARS WARRANTY

With a distinctly **architectural vocation**, **TERES PRO** represents the latest and most **sophisticated inspiration for spotlight with a compact and slim body** equipped with a driver completely hidden into the track. The **TERES PRO ZOOM** version thanks to the **adjustable light beam** is the best solution when flexibility is required to enlighten spaces and objects modifying the accent light to wide beam by a simple touch. **The PRO ART version** responds to the demanding lighting **requirements of museum and exhibition spaces**: the gobos allow you to design clearly and precisely geometrical rays lights, perfect to enhance sculptures and paintings.

Features

- Direct emission
- UGR<19

Led

- 3000K/4000K
- >113 lm/W
- CRI>90/CRI>95
- Eye safety: RGO/RGI
- Mac Adams 3
- L90/B50 >50.000h

Specifications

- In track driver
- CoB LED technology
- PC lens 15°-24°-36°-50°
- ZOOM lens from 10° to 45°

Body

- Die-cast aluminum with epoxy powder coating

Colors

- White RAL 9003 wrinkled
- Black RAL 9005 wrinkled

Certifications

- CE Conformity
- ETL Certification
- Energy efficiency E

On request

- 3500K

TERES PRO PC

PC lens 15°-24°-36°-50°.



UGR<19

IP 40



TERES PRO ZOOM

PC adjustable lens 10°-45°.



UGR<19

IP 40



TERES PRO ART

PC lens adjustable 25°-36° with flaps, CRI>95.



UGR<19

IP 40



TECHNICAL NOTES

For a better application of **TERES PRO ART**, table below, we indicate the suggested diameter or area of the gobos considering the different lens and distance from spot light and masterpiece to be illuminated.

Shape	Distance				
	39.37"	78.74"	118.11"	157.48"	
○	25°	Ø 1.46"	Ø 3.15"	Ø 4.88"	Ø 6.61"
	36°	Ø 2.36"	Ø 4.72"	Ø 7.28"	Ø 9.96"
□	25°	□ 1.02"x1.02"	□ 2.24"x2.24"	□ 3.46"x3.46"	□ 4.67"x4.67"
	36°	□ 1.65"x1.65"	□ 3.39"x3.39"	□ 5.16"x5.16"	□ 7.05"x7.05"

TERES PRO

PRODUCT CODE EXAMPLE

ECTRP - HP - PC - 15 - WH - 309 - 3S

(A) (B) (C) (D) (E) (F) (G)

(A) FAMILY

ECTRP TERES PRO

(B) POWER

MP - Medium power (15W)

HP - High power (21W)

DP - Decrease power (only for DP, DP followed by up two numbers for indicate the power)

(C) OPTICS

PC - Polycarbonate lens (PC version)

ZM - Polycarbonate adjustable lens 10°-45° (ZOOM version)

BG - Polycarbonate adjustable lens 25°-36° with flaps (ART version)

(D) BEAM ANGLE

15 - 15° beam angle (only for PC version)

24 - 24° beam angle (only for PC version)

36 - 36° beam angle (only for PC version)

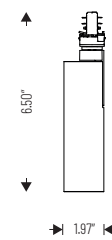
50 - 50° beam angle (only for PC version)

(E) FINISH COLOR

WH- White

BK- Black

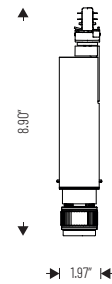
PC SIZE



ZOOM SIZE



ART SIZE



(F) LED CCT

309 - 3000K CRI90

359 - 3500K CRI90 (on request)

409 - 4000K CRI90

(G) WIRING

3S - ON/OFF

ACCESSORIES

ECTRP-RF-X - External ring

A - Chromed

G - Gold

W - White

BK - Black

ECTRP-BR - Barndoors 4 fold

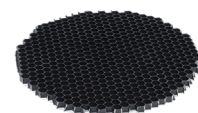
ECTIRP-ND - Honey comb



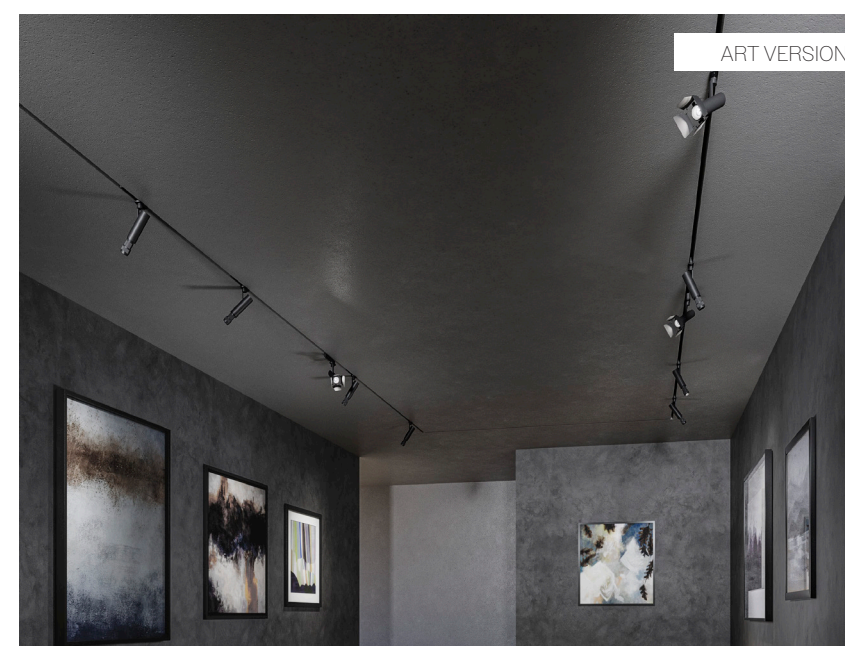
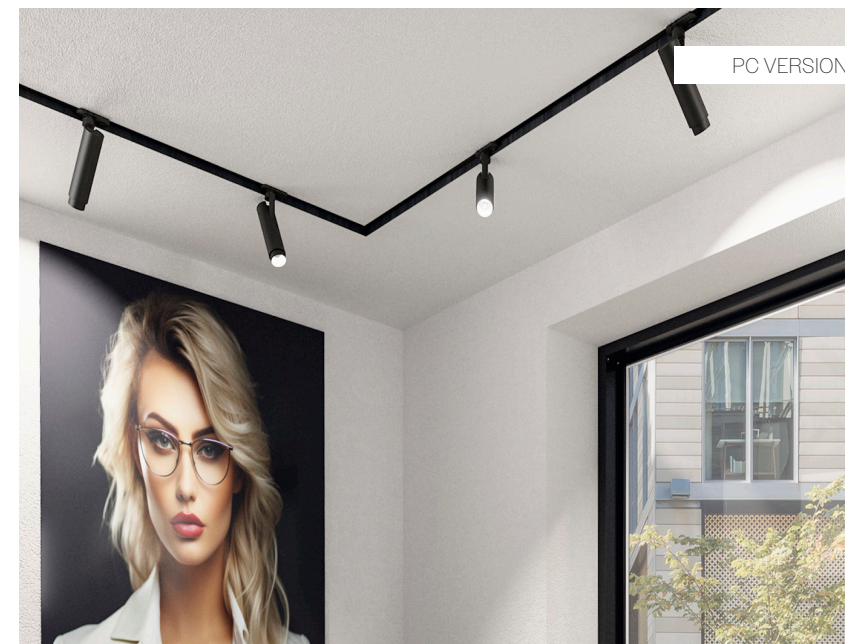
External ring per Teres Pro-PC



Barndoors.



Honey comb.



PC VERSION LUMEN PACKAGE

TERES PRO		
4000K		VT
1.97x6.5"	LP	15W 1695lm
	HP	21W 2373lm

ZOOM VERSION LUMEN PACKAGE

TERES PRO		
4000K		ZOOM
1.97x7.32"	LP	15W 1653lm
	HP	21W 2295lm

ART VERSION LUMEN PACKAGE

TERES PRO		
4000K		GB
1.97x8.9"	LP	15W 1635lm
	HP	21W 2297lm

CLOU

ID ECCLU IP 66



5 YEARS WARRANTY

CLOU enlarges with **unlimited creative solutions the outdoor light**. A **bollard, wall** or **ceiling** element, CLOU is designed to illuminate green areas and semi-open spaces with a modern and brilliant design. The structure is composed by an extruded petal profile with three grooves, where you can install silicone strip that, combined with spots, grant you to play in an amazing way with the light. Moreover, an overlapping junction can be applied to CLOU body to allow you to **create a dynamic weaving profile with different directions in the space** to obtain an even more refined and **personalized lighting composition**.

Features

- IK06
- -20°C/+40°C

Specifications

- PC lens, beam angles: 15°-50°
- Silicone strip 7W/ln

Body

- Aluminum with epoxy powder coating

Colors

- White RAL 9003 wrinkled - code W
- Black RAL 9005 wrinkled - code BK
- Corten Bronze - code BC
- Green RAL 6036 - code VR

Certifications

- CE Conformity
- Energy efficiency D

On request

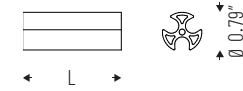
- 3500K

Led

- 3000K
- >108 lm/W; >120 lm/W
- CRI>90
- Eye safety: RG0/RG1
- Mac Adams 3
- L90/B50 >50.000h

CLOU ARM

Extruded aluminum profile.



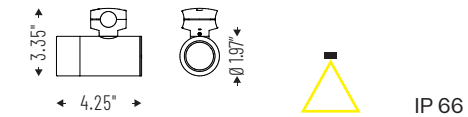
IP 66

Cod.	L In
ECCLUARM700	27.56"
ECCLUARM1000	39.37"
ECCLUARM2000	78.74"
ECCLUARM3000	118.11"



CLOU SPOT

PC lens beam angle 15°-50°.
Single cable entry. Driver built-in.

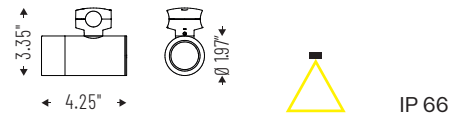


IP 66

Cod. 3000K	Led	lm	Øln
ECCLUISP30915	7W 15°	420	1.97"
ECCLUISP30950	7W 50°	420	1.97"

CLOU SPOT DOUBLE

PC lens beam angle 15°-50°.
Double spot with cable. Driver built-in.



Cod. 3000K	Led	lm	ØIn
ECCLU2SP30915	7W + 7W 15°	840	1.97"
ECCLU2SP30950	7W + 7W 50°	840	1.97"



ACCESSORIES



Wall mounting element with end cap.

ECCLUWMEWEC



Wall mounting element extension.

ECCLUWMEE



Wall mounting element 1 way.

ECCLUWME1W



Driver ON/OFF IP 67 24V.

ECCLUDC24V35W67
ECCLUDC24V75W67
ECCLUDC24V100W67

CLOU ROUND STRIP

Silicone Led strip 7W/ln.



Cod. 3000K	Led	lm	LIn
ECCLUST30924V87	8W/ln	280lm/m	27.55"
ECCLUST30924V810	8W/ln	280lm/m	39.37"
ECCLUST30924V820	8W/ln	280lm/m	78.74"
ECCLUST30924V850	8W/ln	280lm/m	196.85"



TECHNICAL NOTES



Clou can be used as garden light with different length.



Can combine spotlight with diffused light.

TRACK PLUS

ID 15 IP 20



5 YEARS WARRANTY

The **TRACK PLUS DALI UL** has an extra 2 conductors for use in DALI applications and is also offered in a **RECESSED version**, which can be used to plasterboard ceiling. All versions come in different lengths with mounting options which include **Round, recessed Trimless and "H" suspended** installation. The comprehensive range of compatible products and accessories complete this versatile product.

Specifications

- The conductors are integrated in the track by means of rigid extruded profile made from insulating material guaranteeing high dielectric strength
- The 3-phase supply allows for an overall loading of 3x120V/20A + D+/D- 2x1A/50V FELV AC (DALI) 60Hz which can be divided among the 3 circuits
- The 3 separate circuits consisting of 3 phase conductors and a common neutral allow for 3 lighting configurations to be switched individually
- The earth, positioned on the side, leads to an asymmetrical structure of the track. As a consequence couplers must be selected carefully

Body

- Aluminum

Colors

- White RAL 9003 - code B
- Black RAL 9011 - code C8

Related products

- Teres Pro (p. 56)
- Teres (p. 52)

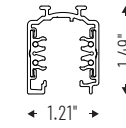
On request

- 120V - 2 circuits
- 277V
- ROUND Track Plus DALI
- TRIMLESS Track Plus DALI
- "H" Track Plus DALI

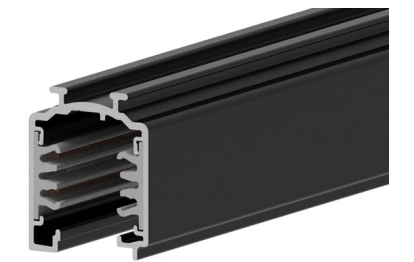


TRACK PLUS UL

ON/OFF, DALI and 1-10V version for ceiling/suspension installation.



IP 20

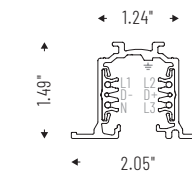


The cross section view shows the position of each line.

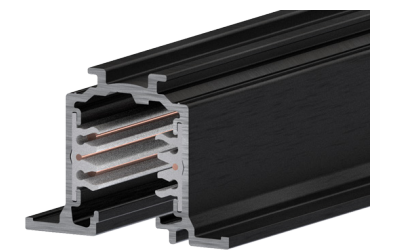
Cod.	Notes	In
15AA1DUL	120V - 3 circuits with common Neutral	39.37
15AA2DUL	120V - 3 circuits with common Neutral	78.74
15AA3DUL	120V - 3 circuits with common Neutral	118.11

TRACK PLUS UL

ON/OFF, DALI and 1-10V version for recessed installation.



IP 20



The cross section view shows the position of each line.

Cod.	Notes	In
15AA1DIUL	120V - 3 circuits with common Neutral	39.37
15AA2DIUL	120V - 3 circuits with common Neutral	78.74
15AA3DIUL	120V - 3 circuits with common Neutral	118.11

ACCESSORIES

ACCESSORIES FOR CEILING/SUSPENSION INSTALLATION



Line end 120V-60Hz
Max 20A.

15AA09ELDXDUL
15AA09ELSXDUL



«L» coupler 120V-60Hz
Max 20A.

15AA05DXDUL
15AA05SXDUL



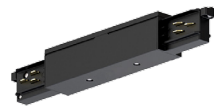
«T» coupler (internal 08/
external 06) 120V-60Hz Max 20A.

15AA06DXDUL
15AA06SXDUL
15AA08DXDUL
15AA08SXDUL



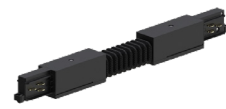
«X» coupler 120V-60Hz
Max 20A.

15AA07DUL



External electrified linear
junction 120V-60Hz Max 20A.

15AA11ELDUL



Flexible joint
120V-60Hz Max 20A.

15AA12DUL



Internal electrified linear
junction 120V-60Hz Max 20A.

15AA11DUL



End-cap.

15AA09D



Steel cable suspension kit.
Cable length 78.74".

15AA13D



Steel cable suspension kit.
Cable length 118.11".

15AA1330D



Ceiling mount.

15AA14D

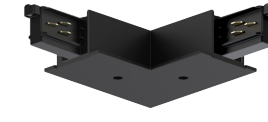
ACCESSORIES

ACCESSORIES FOR RECESSED VERSION



Line end 120V-60Hz
Max 20A. Recessed version.

15AA09ELDXDIUL
15AA09ELSXDUIUL



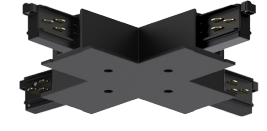
«L» coupler 120V-60Hz
Max 20A. Recessed version.

15AA05DXDIUL
15AA05SXDIUL



«T» coupler (internal 08/
external 06) 120V-60Hz
Max 20A. Recessed version.

15AA06DXDIUL
15AA06SXDIUL
15AA08DXDIUL
15AA08SXDIUL



«X» coupler 120V-60Hz
Max 20A. Recessed version.

15AA07DIUL



Internal electrified linear
junction 120V-60Hz Max 20A.

15AA11DUL



End-cap.
Recessed version.

15AA09DI



Bracket for recessed
installation.

15AA17D

ACCESSORIES FOR ALL TRACK VERSIONS



5-7 poles ceiling power
supply box.

Cable length 78.74"
00AA165PUL
00AA167PUL

Cable length 118.11"
00AA165P30UL
00AA167P30UL



Additional IP 40 cover strip.
Length 39.37"

15AAGP1D



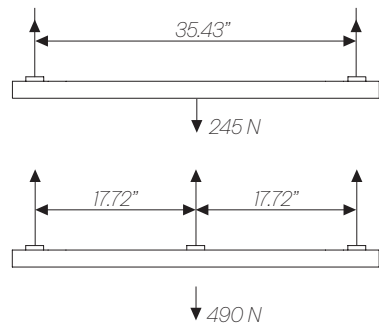
Cutting tool for track
conductors.

15AATC

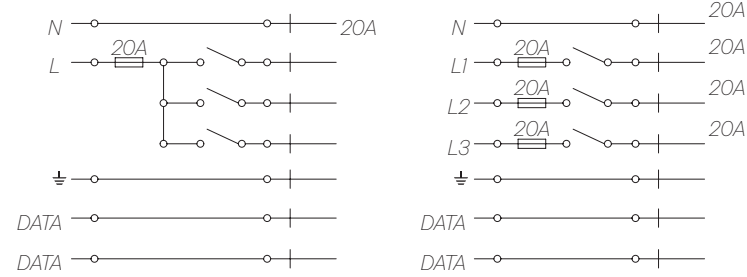
TECHNICAL NOTES

LOAD CAPACITY AND ELECTRICAL DIAGRAMS

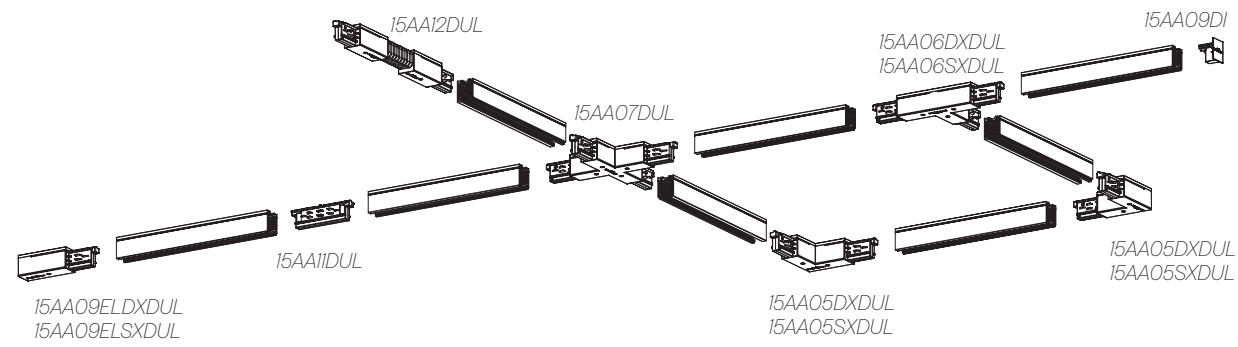
LOAD CAPACITY



ELECTRICAL DIAGRAMS



EXAMPLE OF INSTALLATION DIAGRAM WITH ITEM CODES



brigh

ESSE-CI s.r.l.
Viale del Lavoro 25
35010 Vigonza (PD) Italy
T. +39 049 8959511
info@esse-ci.it

esse-ci
LIVING LIGHT

esse-ci.com