

EUROSTANDARD TRACK

ID 15

EUROSTANDARD TRACK can be selected for either non-dimmable spotlights or applications needing bluetooth control. **The EUROSTANDARD PLUS TRACK DALI** has an extra 2 conductors for use in DALI applications and is also offered in a **H-section version**, which can be used to add uplighting. All versions come in different lengths with mounting options which include **direct, recessed, recessed trimless and suspended installation**. The comprehensive range of compatible products and accessories complete this versatile product.

🕒 Specifications

- The conductors are integrated in the track by means of rigid extruded profile made from insulating material guaranteeing high dielectric strength
- The 3 separate circuits consisting of 3 phase conductors and a common neutral allow for 3 lighting configurations to be switched individually
- The 3-phase supply allows for an overall loading of 16A (10500 VA) which can be divided among the 3 circuits (3x3500 VA)
- The earth, positioned on the side, leads to an asymmetrical structure of the track. As a consequence couplers must be selected carefully

📏 Body

- Aluminum

🎨 Colors

- White RAL 9003 - code B
- Black RAL 9011 - code C8

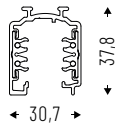
↔ Related products

- Qi (p. 236)
- Semplice Led (p. 72)
- Teres (p. 224)
- Rem Track (p. 320)

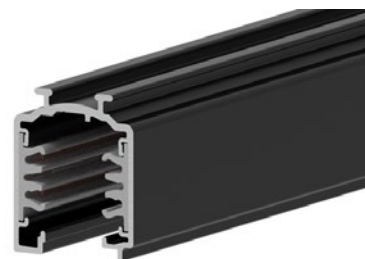


EUROSTANDARD TRACK

ON/OFF version for ceiling/suspension installation.



IP 20

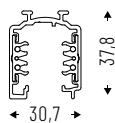


The cross section view shows the position of each line.

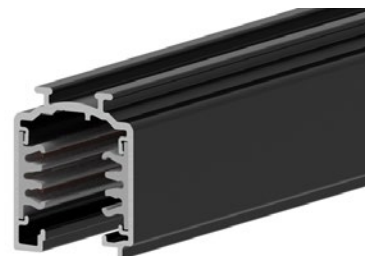
Cod.	Notes	Lmm
15AA1A	Electrified track	1000
15AA2A	Electrified track	2000
15AA3A	Electrified track	3000

EUROSTANDARD PLUS TRACK DALI

DALI ON/OFF version for ceiling/suspension installation.



IP 20

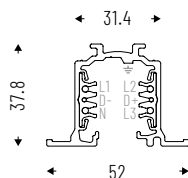


The cross section view shows the position of each line.

Cod.	Notes	Lmm
15AA1DA	Electrified track	1000
15AA2DA	Electrified track	2000
15AA3DA	Electrified track	3000

EUROSTANDARD PLUS TRACK DALI RECESSED

DALI version for recessed installation.



IP 20

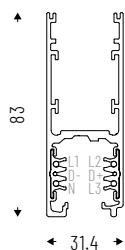


The cross section view shows the position of each line.

Cod.	Notes	Lmm
15AA1DI	Electrified track	1000
15AA2DI	Electrified track	2000
15AA3DI	Electrified track	3000

EUROSTANDARD PLUS TRACK DALI H

Dimmable version. Possibility of using the upper part as cable passage, or as housing for indirect luminaires or emergency group.



IP 20



The cross section view shows the position of each line.

Cod.	Notes	Lmm
15AA1DH	Electrified track	1000
15AA2DH	Electrified track	2000
15AA3DH	Electrified track	3000

ACCESSORIES

ACCESSORIES FOR ON/OFF - DALI CEILING/SUSPENSION INSTALLATION



Line end 250V-50Hz
Max 16A.

ON/OFF

15AA09ELDXA
15AA09ELSXA

DALI

15AA09ELDXD
15AA09ELSXD



"L" coupler 250V-50Hz
Max 16A.

ON/OFF

15AA05DXA
15AA05SXA

DALI

15AA05DXD
15AA05SXD



"T" coupler (internal 08/external
06) 250V-50Hz Max 16A.

ON/OFF

15AA06DXA
15AA06SXA
15AA08DXA
15AA08SXA

DALI

15AA06DXD
15AA06SXD
15AA08DXD
15AA08SXD



"X" coupler 250V-50Hz
Max 16A.

ON/OFF

15AA07A

DALI

15AA07D



External electrified linear
junction 250V-50Hz Max 16A.

ON/OFF

15AA11ELA

DALI

15AA11ELD



Flexible joint 250V-50Hz
Max 16A.

ON/OFF

15AA12A

DALI

15AA12D



Internal electrified linear
junction 250V-50Hz Max 16A.

ON/OFF

15AA11A

DALI

15AA11D



End-cap.

ON/OFF - DALI

15AA09D



Steel cable suspension kit.
Cable length 1500mm.

ON/OFF - DALI

15AA13D



Steel cable suspension kit.
Cable length 3000mm.

ON/OFF - DALI

15AA1330D



Ceiling mount.

ON/OFF - DALI

15AA14D

ACCESSORIES

ACCESSORIES FOR DALI RECESSED VERSION



Line end 250V-50Hz
Max 16A. Recessed version.

15AA09ELDXDI
15AA09ELSXDI



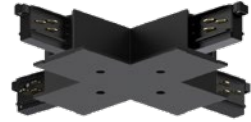
«L» coupler 250V-50Hz
Max 16A. Recessed version.

15AA05DXDI
15AA05SXDI



«T» coupler (internal 08/
external 06) 250V-50Hz
Max 16A. Recessed version.

15AA06DXDI
15AA06SXDI
15AA08DXDI
15AA08SXDI



«X» coupler 250V-50Hz
Max 16A. Recessed version.

15AA07DI



Internal electrified linear
junction 250V-50Hz Max 16A.

15AA11D



End-cap.
Recessed version.

15AA09D



Bracket for recessed
installation.

15AA17D

ACCESSORIES FOR DALI «H» VERSION



Live end 250V-50Hz
Max 16A «H» version.

15AA09ELDXDH
15AA09ELSXDH



«L» coupler 250V-50Hz
Max 16A «H» version.

15AA05DXDH
15AA05SXDH



«T» coupler (internal 08/
external 06) 250V-50Hz
Max 16A «H» version.

15AA06DXDH
15AA06SXDH
15AA08DXDH
15AA08SXDH



«X» coupler 250V-50Hz
Max 16A «H» version.

15AA07DH



External electrified linear
junction 250V-50Hz
Max 16A «H» version.

15AA11ELDH



Internal electrified linear
junction 250V-50Hz
Max 16A.

15AA11D



End-cap «H» version.

15AA09DH



Steel cable suspension kit.
Cable length 1500mm.

15AA13DH

ACCESSORIES FOR ALL TRACK VERSIONS



Steel cable suspension kit.
Cable length 3000mm.

15AA1330DH



5-7 poles ceiling power supply box.

Cable length 2000mm

00AA165P
00AA167P

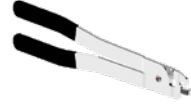
Cable length 3000mm

00AA165P30
00AA167P30



Additional IP 40 cover strip.
Length 1000mm.

15AAGP1D



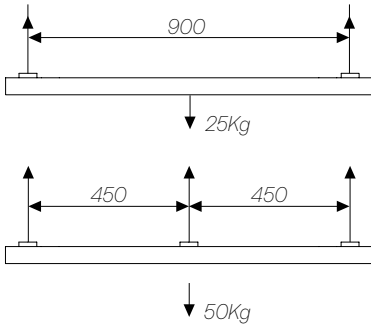
Cutting tool for track conductors.

15AATC

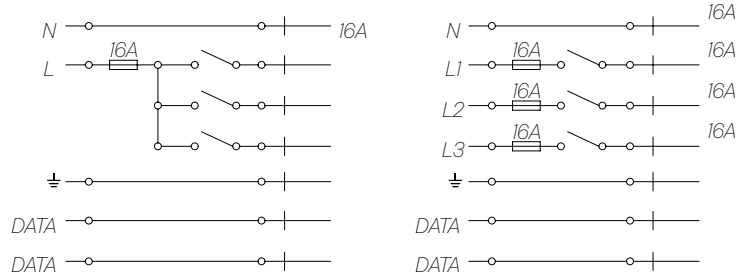
TECHNICAL NOTES

LOAD CAPACITY AND ELECTRICAL DIAGRAMS

LOAD CAPACITY



ELECTRICAL DIAGRAMS



EXAMPLE OF INSTALLATION DIAGRAM WITH ITEM CODES

