

GROOVE is a competitive and versatile profile **suitable for recessed, surface and suspended mounting**. Produced from painted extruded aluminium in a wide range of lengths and fitted with the latest LED technology for direct or bi-directional light distribution. With its choice of optics, GROOVE is a perfect **high performance ambient lighting solution** for commercial applications and, with the additional powerful adjustable accent **spotlights**, it is also suitable for retail and educational applications. A **wide range of accessories** are available, making GROOVE an extremely flexible design tool for architects and lighting designers.

☑ Features

- Direct emission
- Direct/indirect emission
- UGR<19
- IP 40

💡 Led

- 3000K/4000K
- >105 lm/W
- CRI>90
- Eye safety: RG0/RG1
- Mac Adams 3
- L80/B20 >80.000h

🕒 Specifications

- Built-in Driver
- Diffuser with DPL technology, UGR<19 for environments with display screen equipment
- Suspended version with double emission: direct/indirect
- SPOT modules internal aluminum reflector 50° emission

☐ Body

- Aluminum with epoxy powder coating

🎨 Colors

- White RAL 9003 - code B
- Black RAL 9005 - code C8

★ Certifications

- CE Conformity
- BIS Conformity
- RETILAP Conformity
- Energy efficiency C
- 5 years warranty
- ETL certification

⇌ Related products

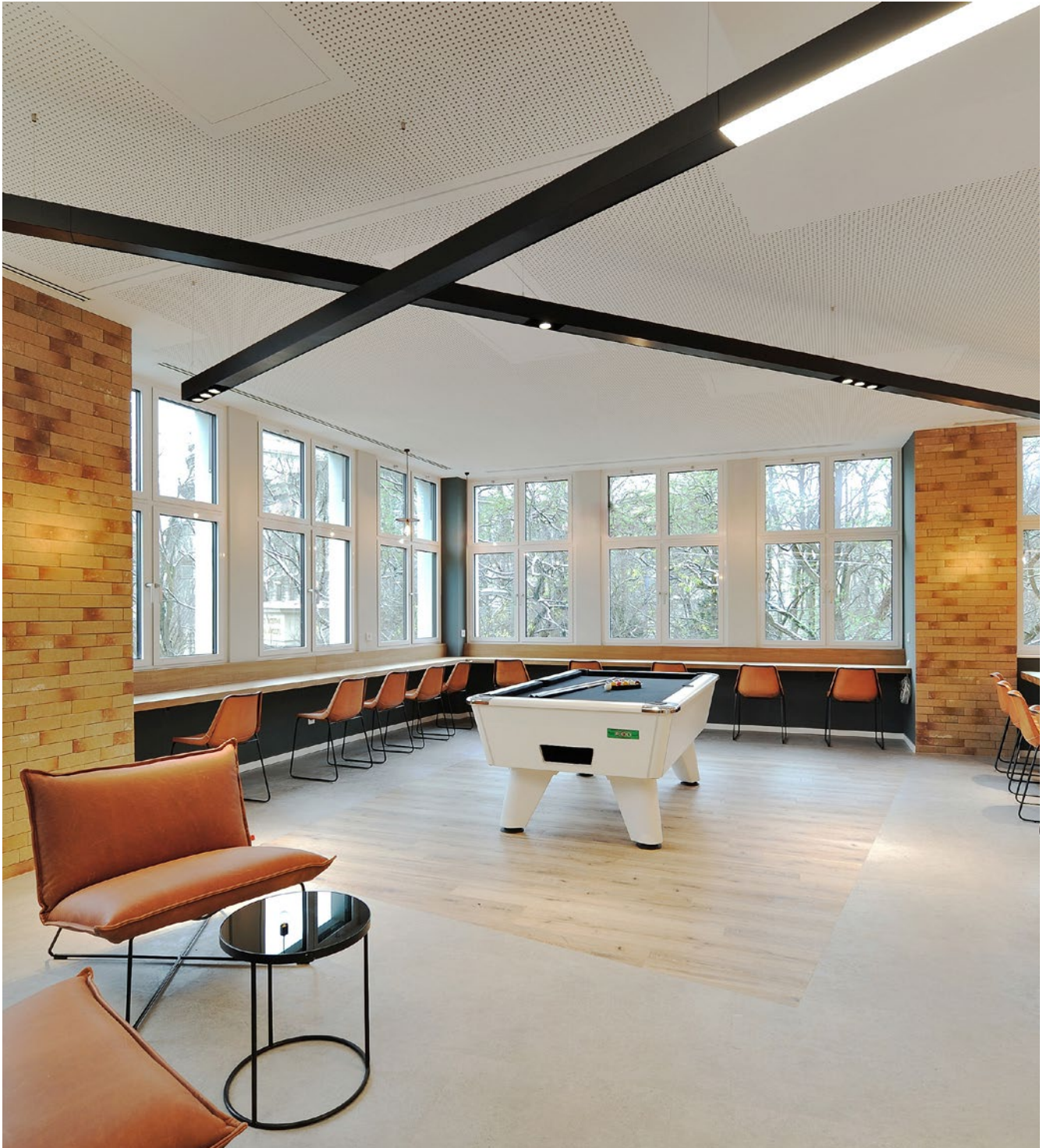
- Groove Display (p. 104)
- Groove IP54 (p. 301)
- Groove Display IP54 (p. 304)

📄 On request

- DALI - code D
- Bluetooth - code BT*
- Emergency 1 hr - code EM*
- Emergency 3 hrs - code EM3H*
- 2700K - code K27*
- 6500K - code K65*
- Human Centric Lighting*

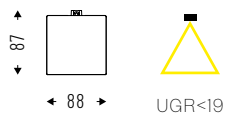
* Where available





GROOVE

Direct emission with DPL technology diffuser (UGR<19).



IP 40



End caps not included.

LOW POWER VERSION (20 W/m)

Cod. 4000K	Led	lm	Lmm
43DR24DPLK4	24W	2646	1130
43DR30DPLK4	30W	3308	1410
43DR36DPLK4	36W	3969	1690
43DR42DPLK4	42W	4631	1970
43DR48DPLK4	48W	5292	2250
43DR54DPLK4	54W	5954	2533
43DR60DPLK4	60W	6615	2810
43DR66DPLK4	66W	7277	3080

LOW POWER VERSION (20 W/m)

Cod. 3000K	Led	lm	Lmm
43DR24DPLK3	24W	2460	1130
43DR30DPLK3	30W	3077	1410
43DR36DPLK3	36W	3691	1690
43DR42DPLK3	42W	4306	1970
43DR48DPLK3	48W	4921	2250
43DR54DPLK3	54W	5537	2533
43DR60DPLK3	60W	6152	2810
43DR66DPLK3	66W	6767	3080

HIGH POWER VERSION (40 W/m)

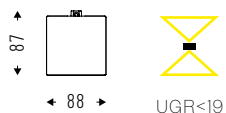
Cod. 4000K	Led	lm	Lmm
43DR45DPLK4HP	45W	4961	1130
43DR57DPLK4HP	57W	6284	1410
43DR68DPLK4HP	68W	7497	1690

HIGH POWER VERSION (40 W/m)

Cod. 3000K	Led	lm	Lmm
43DR45DPLK3HP	45W	4614	1130
43DR57DPLK3HP	57W	5844	1410
43DR68DPLK3HP	68W	6972	1690

GROOVE DOUBLE EMISSION

Direct/indirect emission with DPL technology diffuser (UGR<19).



IP 40



End caps not included.

LOW POWER VERSION (20 W/m)

Cod. 4000K	Led	Im	Lmm
43DI30DPLK4	30W: 24W+6W	3329	1130
43DI36DPLK4	36W: 30W+6W	3990	1410
43DI48DPLK4	48W: 36W+12W	5334	1690
43DI54DPLK4	54W: 42W+12W	5996	1970
43DI72DPLK4	72W: 48W+24W	8022	2250
43DI78DPLK4	78W: 54W+24W	8684	2533
43DI84DPLK4	84W: 60W+24W	9345	2810
43DI90DPLK4	90W: 66W+24W	10007	3080

LOW POWER VERSION (20 W/m)

Cod. 3000K	Led	Im	Lmm
43DI30DPLK3	30W: 24W+6W	3095	1130
43DI36DPLK3	36W: 30W+6W	3711	1410
43DI48DPLK3	48W: 36W+12W	4960	1690
43DI54DPLK3	54W: 42W+12W	5576	1970
43DI72DPLK3	72W: 48W+24W	7460	2250
43DI78DPLK3	78W: 54W+24W	8076	2533
43DI84DPLK3	84W: 60W+24W	8691	2810
43DI90DPLK3	90W: 66W+24W	9306	3080

HIGH POWER VERSION (40 W/m)

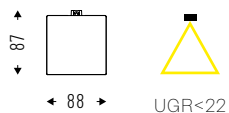
Cod. 4000K	Led	Im	Lmm
43DI51DPLK4HP	51W: 45W+6W	5644	1130
43DI63DPLK4HP	63W: 57W+6W	6967	1410
43DI80DPLK4HP	80W: 68W+12W	10227	1690

HIGH POWER VERSION (40 W/m)

Cod. 3000K	Led	Im	Lmm
43DI51DPLK3HP	51W: 45W+6W	5248	1130
43DI63DPLK3HP	63W: 57W+6W	6480	1410
43DI80DPLK3HP	80W: 68W+12W	9511	1690

GROOVE PG

Antistatic satin methacrylate diffuser, for homogeneous emission UGR<22.



IP 40



End caps not included.

LOW POWER VERSION (20 W/m)

Cod. 4000K	Led	lm	Lmm
43DR24PGK4	24W	2436	1130
43DR30PGK4	30W	3045	1410
43DR36PGK4	36W	3654	1690
43DR54PGK4	54W	5481	2533
43DR66PGK4	66W	6699	3080

LOW POWER VERSION (20 W/m)

Cod. 3000K	Led	lm	Lmm
43DR24PGK3	24W	2268	1130
43DR30PGK3	30W	2835	1410
43DR36PGK3	36W	3402	1690
43DR54PGK3	54W	5103	2533
43DR66PGK3	66W	6237	3080

HIGH POWER VERSION (40 W/m)

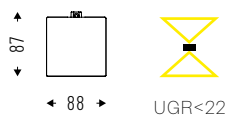
Cod. 4000K	Led	lm	Lmm
43DR45PGK4HP	45W	4482	1130
43DR57PGK4HP	57W	5677	1410
43DR68PGK4HP	68W	6773	1690

HIGH POWER VERSION (40 W/m)

Cod. 3000K	Led	lm	Lmm
43DR45PGK3HP	45W	4172	1130
43DR57PGK3HP	57W	5284	1410
43DR68PGK3HP	68W	6304	1690

GROOVE PG DOUBLE EMISSION

Direct/indirect emission with diffuser in antistatic satin methacrylate, for emission homogeneous UGR<22.



IP 40

End caps not included.

LOW POWER VERSION (20 W/m)

Cod. 4000K	Led	Im	Lmm
43DI30PGK4	30W: 24W+6W	3119	1130
43DI36PGK4	36W: 30W+6W	3728	1410
43DI48PGK4	48W: 36W+12W	5019	1690
43DI78PGK4	78W: 54W+24W	8211	2533
43DI90PGK4	90W: 66W+24W	9429	3080

LOW POWER VERSION (20 W/m)

Cod. 3000K	Led	Im	Lmm
43DI30PGK3	30W: 24W+6W	2903	1130
43DI36PGK3	36W: 30W+6W	3470	1410
43DI48PGK3	48W: 36W+12W	4671	1690
43DI78PGK3	78W: 54W+24W	7642	2533
43DI90PGK3	90W: 66W+24W	8776	3080

HIGH POWER VERSION (40 W/m)

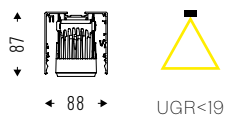
Cod. 4000K	Led	Im	Lmm
43DI51PGK4HP	51W: 45W+6W	5165	1130
43DI63PGK4HP	63W: 57W+6W	6360	1410
43DI80PGK4HP	80W: 68W+12W	8138	1690

HIGH POWER VERSION (40 W/m)

Cod. 3000K	Led	Im	Lmm
43DI51PGK3HP	51W: 45W+6W	4807	1130
43DI63PGK3HP	63W: 57W+6W	5919	1410
43DI80PGK3HP	80W: 68W+12W	7573	1690

GROOVE SPOT

Aluminum reflectors 50° beam angle.



IP 40

Not for single installation.

Cod. 4000K	Led	Im	Lmm
43AA113K450	1x13W	1x1112	162
43AA213K450	2x13W	2x1112	262
43AA313K450	3x13W	3x1112	362

Cod. 3000K	Led	Im	Lmm
43AA113K350	1x13W	1x990	162
43AA213K350	2x13W	2x990	262
43AA313K350	3x13W	3x990	362

ACCESSORIES



Single wire adjustable suspension kit.
Length: 1500/3000mm.

43AA13
43AA1330



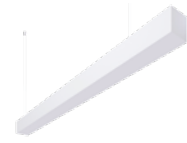
3-5 poles ceiling powered supply box.
Cable length 2000mm.

00AA16
00AA165P



End caps kit (4mm thickness already included in the product total length).

43AA09



Blind connection module in aluminium. Linear mechanical joints included.

43MC1000: 1000mm
43MC2000: 2000mm



Electrified linear joint.

43AA11



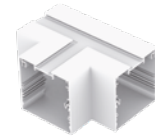
2 ways luminous joint (dim. 202x202mm).

43DR12K4A90:
12W(LP) 4000K
43DR12K3A90:
12W(LP) 3000K
43DR24K4A90:
24W(HP) 4000K
43DR24K3A90:
24W(HP) 3000K



2 ways joint (dim. 202x202mm).

43AA05



3 ways joint (dim. 202x316mm).

43AA06



4 ways joint (dim. 316x316mm).

43AA07



Brackets kit for recessed installation.

43AA17



Microprismatic diffuser UGR<19 10m.

43DPL10000



Metarylate diffuser UGR<22 10m.

43PG10000



Blind module L 200mm with constant light and presence sensor.

43AA00DIM