

**NOBIS's** family is designed for **wall and ceiling installation**, declined also in **bollard, ground, semi-recessed and USB versions**. The sliding optical system allows to direct the beam and thanks to the **endless possibilities of colors** of the cover this family is the ideal solution in every context.

## ☑ Features

- Direct emission
- IP 66
- IK 07
- -20°/+40°

## 💡 Led

- 3000K
- >52 lm/W
- CRI>90
- Eye safety: RG0/RG1
- Mac Adams 3
- L80/B10 >50.000h

## ⌚ Specifications

- Built-in driver
- Satin polycarbonate diffuser

## ☐ Body

- Shockproof, antistatic technopolymer with an exclusive treatment that guarantees a homogeneous emission over the entire surface

## 🎨 Colors

- White RAL 9003 wrinkled - code W
- Black RAL 9005 wrinkled - code BK
- Anthracite grey - code GA
- Corten bronze - code BC

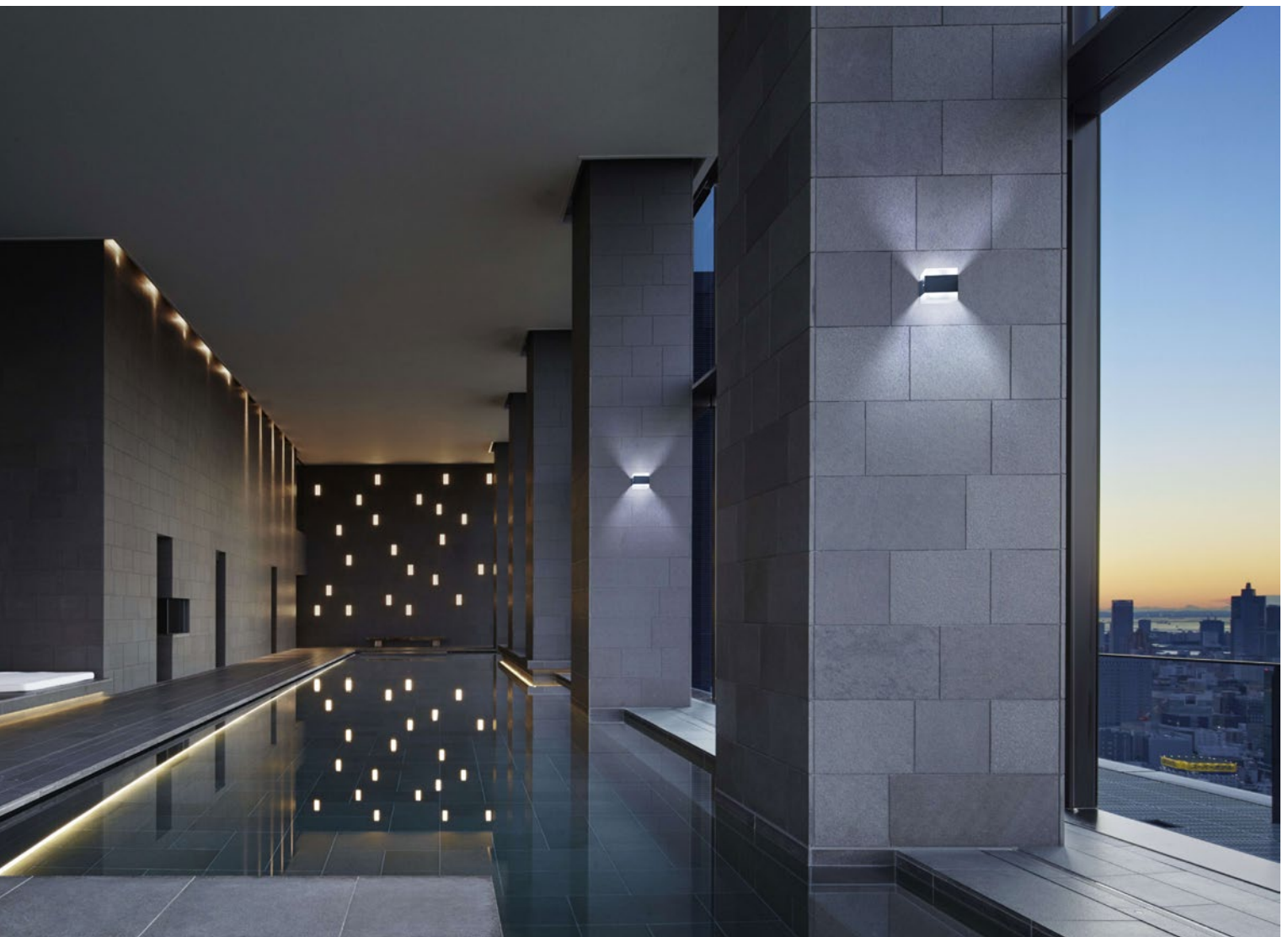
## ☆ Certifications

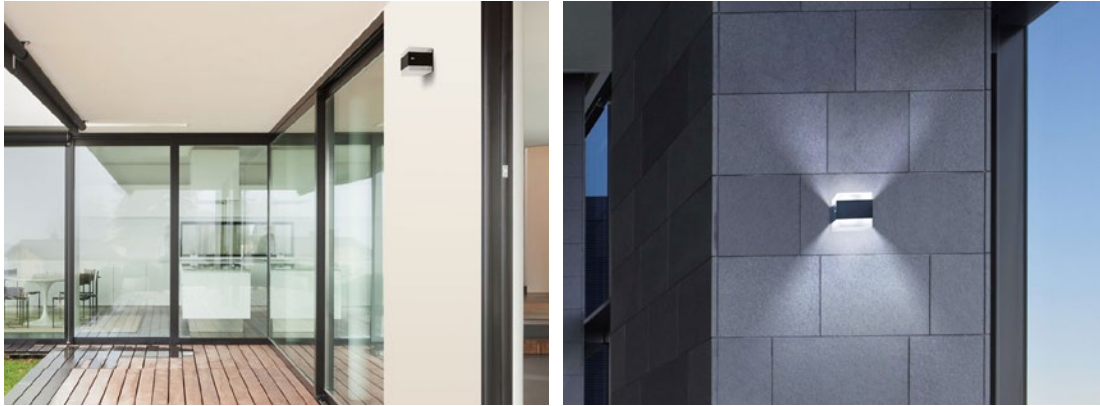
- CE Conformity
- Energy efficiency E
- 5 years warranty

## 📦 On request

- 4000K - code K4\*

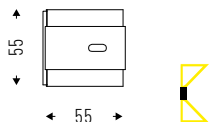
\* Where available





## NOBIS\_\_MINI

Satin polycarbonate diffuser.



IP 66 IK07

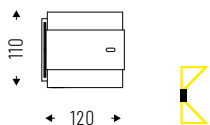


Equipped with 2000mm cable.

Cod. 3000K	Led	lm	Lmm
90PC3K366	3W	208	55

## NOBIS\_\_

Satin polycarbonate diffuser.



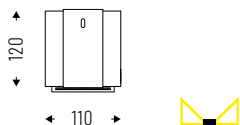
IP 66 IK07



Cod. 3000K	Led	lm	Lmm
90PC13K366	13W	696	110

## NOBIS\_\_USB

Satin polycarbonate diffuser screen with power button and color temperature selection between 2700K/3500K/4500K.



IP 66 IK07

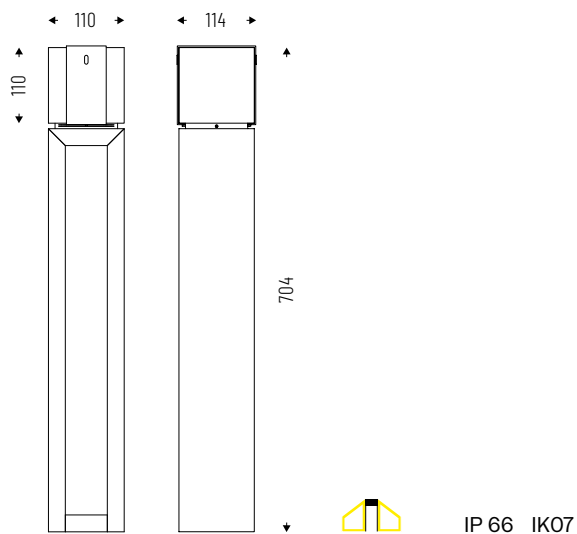


Device with built-in batteries, rechargeable via USB socket. 5h autonomy.

Cod. 3000K	Led	lm	Lmm
90PC2USB66	2W	140	110

# NOBIS BOLLARD

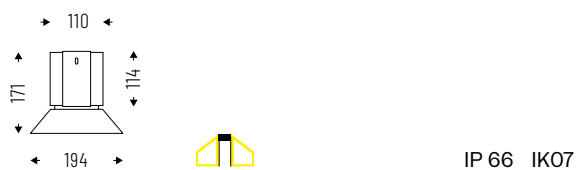
Satin polycarbonate diffuser.



Cod. 3000K	Led	lm	Lmm
90PC13K3B66	13W	696	704

# NOBIS GROUND

Satin polycarbonate diffuser.



Cod. 3000K	Led	lm	Lmm
90PC13K3G66	13W	696	110 (194)

## ACCESSORIES



NOBIS MINI  
Box for semi-recessed  
wall installation.

**90AA19**



NOBIS  
Box for semi-recessed  
wall installation.

**90AA19S**

## TECHNICAL NOTES

### ADJUSTABLE COVER

---

