

# TERES PRO

ID 14

With a distinctly **architectural vocation**, **TERES PRO** represents the latest and most **sophisticated inspiration for spotlight with a compact and slim body** equipped with a driver completely hidden into the track. The **TERES PRO ZOOM** version thanks to the **adjustable light beam** is the best solution when flexibility is required to enlighten spaces and objects modifying the accent light to wide beam by a simple touch. **The PRO ART version** responds to the demanding lighting **requirements of museum and exhibition spaces**: the gobos allow you to design clearly and precisely geometrical rays lights, perfect to enhance sculptures and paintings.

## ☑ Features

- Direct emission
- UGR<19
- IP 40

## 💡 Led

- 3000K/4000K
- >113 lm/W
- CRI>90/CRI>95
- Eye safety: RGO/RGI
- Mac Adams 3
- L80/B10 >50.000h

## 🕒 Specifications

- In track driver
- CoB LED technology
- PC lens 15°-24°-36°-50°
- ZOOM lens from 25° to 60°

## 📦 Body

- Die-cast aluminum with epoxy powder coating

## 🎨 Colors

- White RAL 9003 wrinkled - code W
- Black RAL 9005 wrinkled - code BK

## ★ Certifications

- CE Conformity
- Energy efficiency E
- 5 years warranty
- ETL Certification

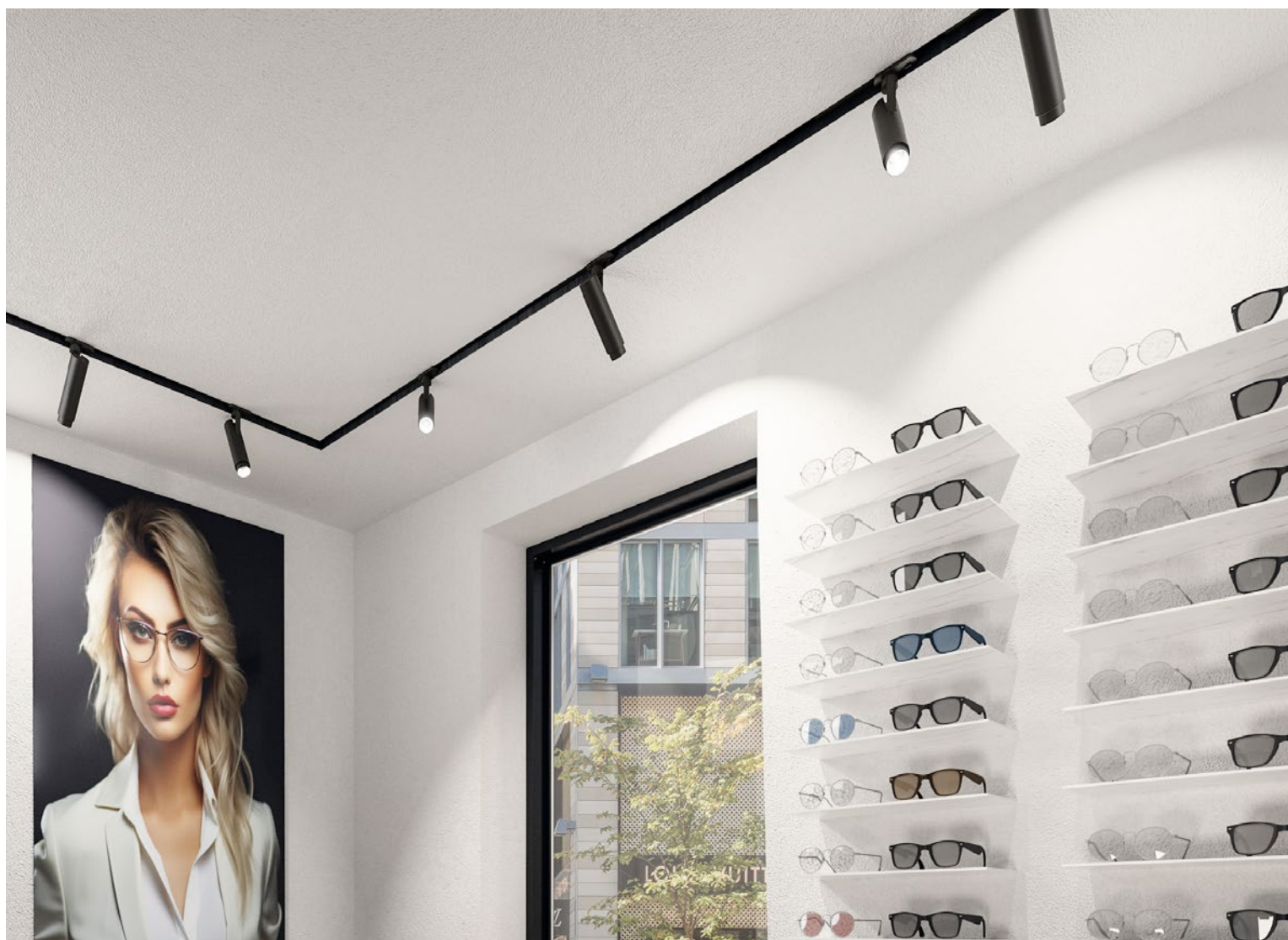
## ⇌ Related products

- Teres (p. 224)
- Teres Exte (p. 231)
- Teres Micro Zoom (p. 178)

## 📦 On request

- DALI - code D\*
- Bluetooth - code BT\*
- 2700K - code: K27\*
- 5000K - code: K5\*

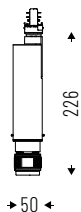
\* Where available





# TERES PRO ART

PC lens adjustable 25°-36° with flaps, CRI>95.



UGR<19

IP 40



Cod. 4000K	Led	lm	Ømm
14GB15K4	15W 25°-36°	1635	50
14GB21K4	21W 25°-36°	2297	50

Cod. 3000K	Led	lm	Ømm
14GB15K3	15W 25°-36°	1530	50
14GB21K3	21W 25°-36°	2067	50



For ceiling installation version add «P» at the end of the code.



For ceiling installation version on plasterboard add «R» at the end of the code.

## ACCESSORIES



External ring for Teres Pro-Pc.

- 14RF A - Chromed
- 14RF G - Gold
- 14RF W - White
- 14RF B K - Black



Barndoors 4 fold.

14AA50BR

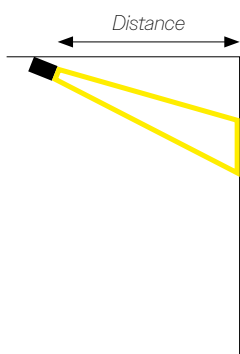


Honey comb.

14AA50ND

## TECHNICAL NOTES

For a better application of **TERES PRO ART**, table below, we indicate the suggested diameter or area of the gobos considering the different lens and distance from spot light and masterpiece to be illuminated.



Shape	Distance				
	1m	2m	3m	4m	
○	25°	Ø 37cm	Ø 80cm	Ø 124cm	Ø 168cm
	36°	Ø 60cm	Ø 120cm	Ø 185cm	Ø 253cm
□	25°	□ 26x26cm	□ 57x57cm	□ 88x88cm	□ 119x119cm
	36°	□ 42x42cm	□ 86x86cm	□ 131x131cm	□ 179x179cm